

DIGITAL COPIER

Revised Edition

AR-5316
AR-5320
AR-1118
AR-M205
AR-M160
AR-5220

MODEL

CONTENTS

- | | |
|--|---|
| 1 Exteriors | 13 Base plate unit 1 |
| 2 Operation panel section
(AR-1118/AR-5316/AR-5320) | 14 Base plate unit 2 |
| 3 Operation panel section
(AR-M160/AR-M205/AR-5220) | 15 Manual paper feeding multi unit |
| 4 Side door unit | 16 Delivery frame unit
(AR-1118/AR-5316/AR-5320) |
| 5 Optical unit | 17 Delivery frame unit
(AR-M160/AR-M205/AR-5220) |
| 6 2nd,3rd mirror unit | 18 TC case unit |
| 7 Middle frame unit | 19 250 sheets tray unit |
| 8 Process unit | 20 Packing material & Accessories |
| 9 DV cartridge unit
(AR-5316 U.S.A,Canada) | 21 2nd Tray exteriors (AR-5320/AR-M205) |
| 10 DV cartridge unit
(Except AR-5316 U.S.A,Canada) | 22 2nd Tray paper feeding unit
(AR-5320/AR-M205) |
| 11 Fusing unit | ■ Index |
| 12 Bain driving unit | |

DEFINITION

- Rank A : Maintenance parts, and consumable parts which are not included in but closely related to maintenance parts
- Rank B : Performance/function parts (sensors, clutches, and other electrical parts), consumable parts
- Rank E : Unit parts including PWB
- Rank D : Preparation parts (External fitting, packing, parts packed together)
- Rank C : Parts other than the above (excluding sub components of PWB)

Because parts marked with "△" is indispensable for the machine safety maintenance and operation, it must be replaced with the parts specific to the product specification.

- Other than this Parts Guide, please refer to documents Service Manual(including Circuit Diagram)of this model.
- Please use the 13 digit code described in the right hand corner of front cover of the document, when you place an order.
- For U.S. only-Use order codes provided in advertising literature. Do not order from parts department.

[NOTE]

- * There parts are supplied by SMF

<Note for use of the revised Parts Guide>







- Interchangeability of parts is expressed by No1~6 as shown in the table below.

<Interchangeability>

1	Interchangeable.
2	Current type can be used in place of new type. New type cannot be used in place of current type.
3	Current type cannot be used in place of new type. New type can be used in place of current type.
4	Not interchangeable.
5	Interchangeable if replaced with same types of related parts in use.
6	Others.

- New & Addition, Change, Abolition, and Quantity change are expressed with the marks shown in the table below.

<Change of Division>

New & Addition	
Change	
Abolition	
Quantity (increase) /Others	
Quantity (decrease)	
Correction	

- Running Change of Effective Time is expressed as R/C.

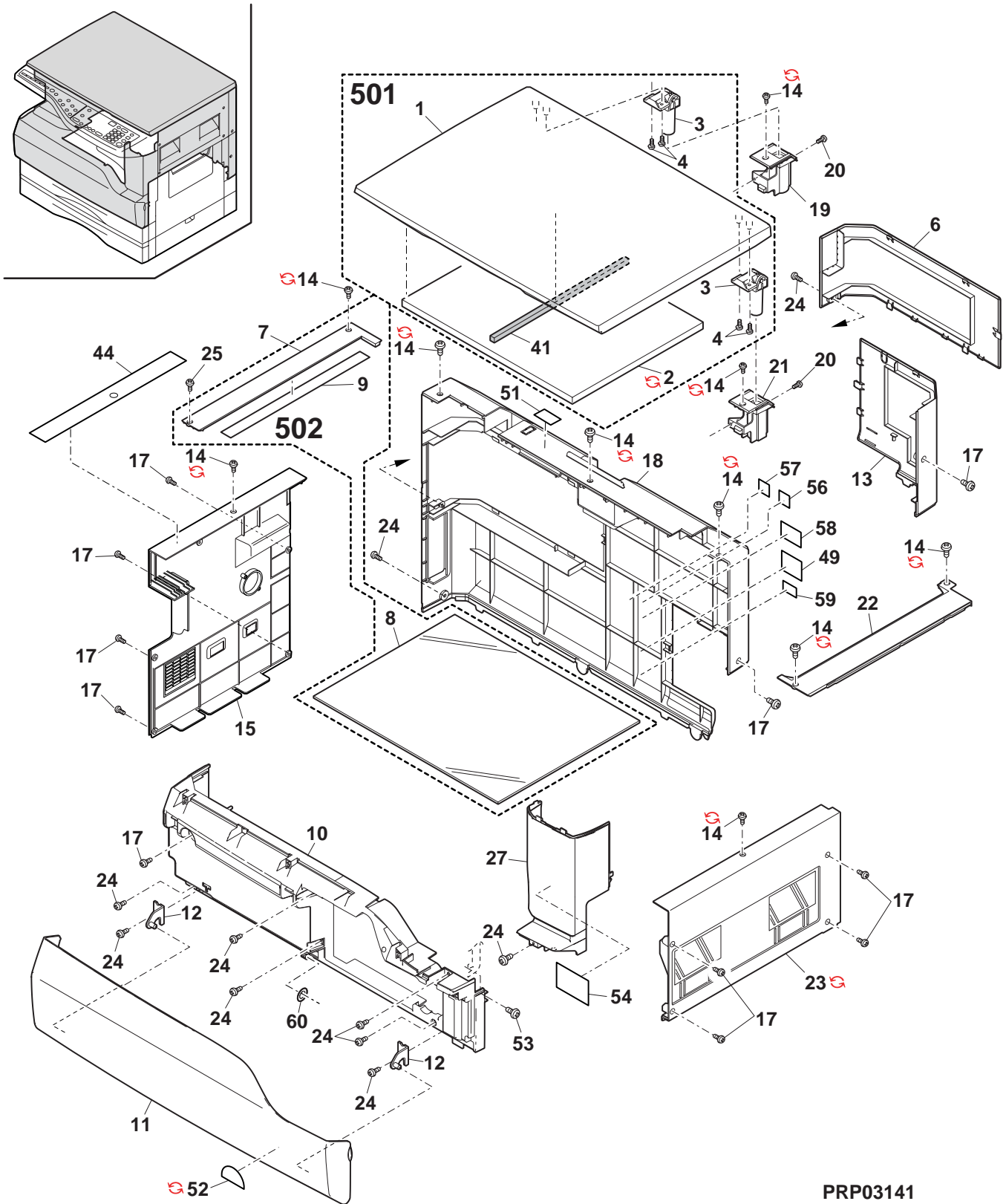
<Effective Time>

R / C	Running Change
-------	----------------

1 Exteriors

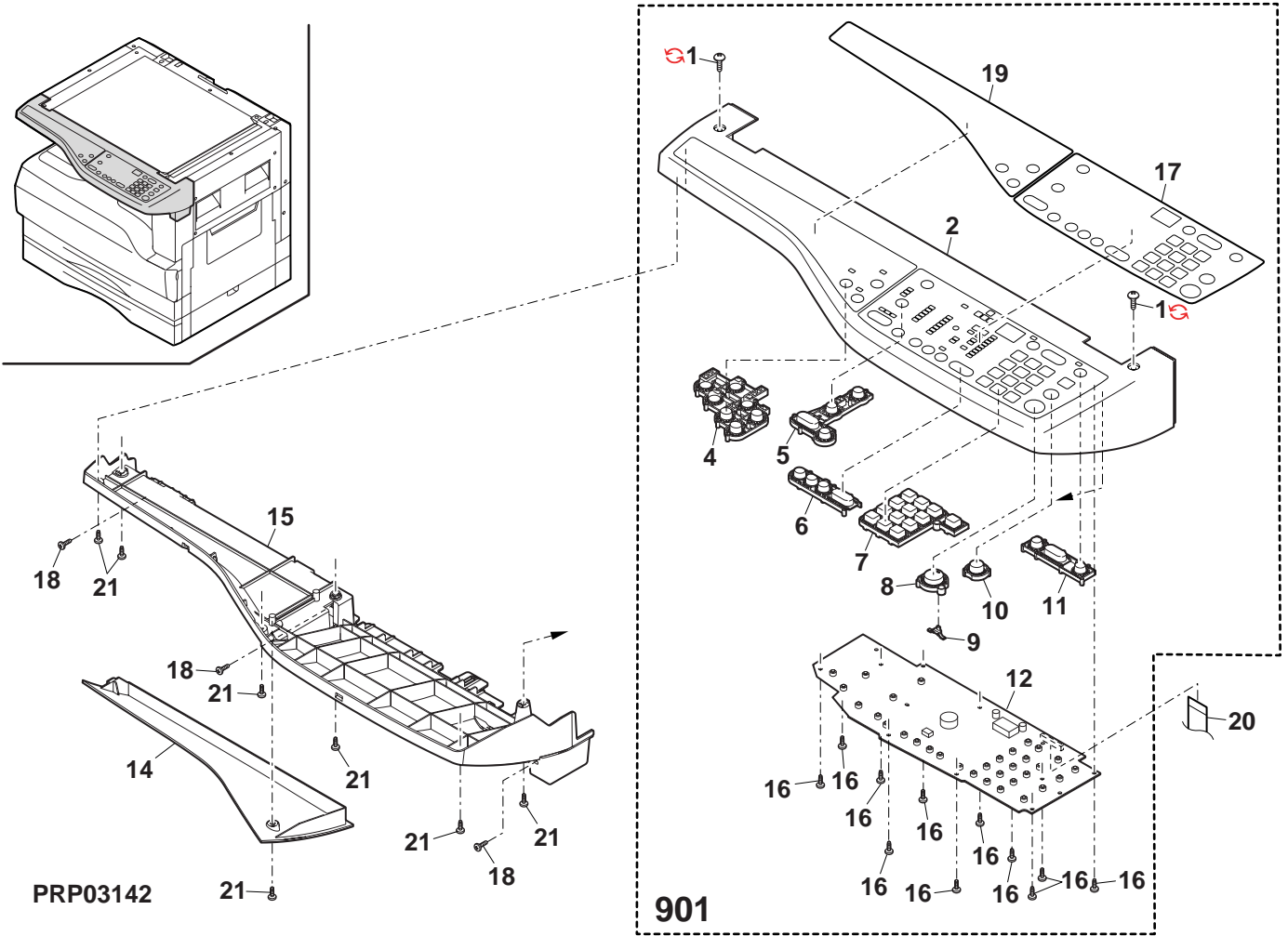
NO.	PARTS CODE	Inter-change	PRICE RANK	NEW MARK	PART RANK	DESCRIPTION	TR No.	Effective time
1	GCOVH0010QSE5		BD		D	OC cover [Except AR-M205]		
2	PCUSS0023QSZ1		AV		C	OC sheet [Except AR-M205]		
2	PCUSS0023QSZ2	1	AV		C	OC sheet [Except AR-M205]		06/08 mid
3	CHNG-0007QS02		AM		C	OC hinge [Except AR-M205]		
4	XEBS740P10000		AA		C	Screw(4x10) [Except AR-M205]		
6	GCOV-0047QSZZ		AM		D	Rear cabinet ERDH cover		
7	CFIX-0024QS01		AL		D	Glass fixing plate		
8	PGLSP0003QSZZ		BA		B	Table glass		
9	PSHEZ0220QSZ1		AK		C	Sheet		
10	GCAB-0068QSZZ		AV		D	Front cabinet		
11	CCOV-0046QS37		AY		D	Front cabinet cover [AR-5316(U.S.A,Canada)]		
	CCOV-0046QS08		AX		D	Front cabinet cover [AR-5316(Other Countries)]		
	CCOV-0046QS35		AY		D	Front cabinet cover [AR-1118]		
	CCOV-0046QS09		AX		D	Front cabinet cover [AR-5320]		
	CCOV-0046QS07		AX		D	Front cabinet cover [AR-M160]		
	CCOV-0046QS02		AX		D	Front cabinet cover [AR-M205]		
11	CCOV-0046QS05		AW		D	Front cabinet cover [AR-5220]		
12	CARMP0010QS03		AD		C	Hinge arm		
13	GCOV-0048QSZZ		AM		D	Rear cabinet cover		
14	LX-BZ0750FCPZ		AA		C	Screw(3x6)		
	LX-BZ0088QSPZ	1	AA		C	Screw(3x6)		07/09
15	GCAB-0071QSZZ		AU		D	Left cabinet		
17	XHBS730P08000		AB		C	Screw(3x8)		
18	GCAB-0070QSZZ		BA		D	Rear cabinet [AR-1118/AR-5316/AR-5320]		
	GCAB-0070QSZZ		BA		D	Rear cabinet [AR-M160/AR-M205/AR-5220]		
19	PGIDM0110QSZZ		AG		C	Hinge guide L		
20	XHBS730P06000		AC		C	Screw(3x6)		
21	PGIDM0111QSZZ		AG		C	Hinge guide R		
22	GCOVH0011QSE1		AM		D	OC glass fixing cover		
23	GCAB-0015QSEB		AU		D	Right cabinet		
	GCAB-0015QSEC	1	AU		D	Right cabinet		06/04
24	XEBS740P10000		AA		C	Screw(4x10)		
25	LX-BZ0759FCPZ		AC		C	Screw(3x6)		
27	GCAB-0079QSZZ		AP		D	Front right cabinet (U.S.A,Canada)		
	CCAB-0079QS01		AQ		D	Front right cabinet (Except U.S.A,Canada)		
41	PMLT-0039QSZZ		AC		C	OC cushion [Except AR-M205]		
44	TLABH0458QSZZ		AF		D	Operation label [Except AR-5316(U.S.A,Canada)]		
49	TLABZ0058QSZZ		AD		D	Class 1 label (Except U.S.A,Canada,Taiwan,Brazil,Saudi Arabia,LAG2)		
51	TLABH0482QSZZ		AE		D	Scanning direction label [Except AR-1118/AR-5316(U.S.A,Canada,Australia,New Zealand)]		
52	TLABZ4047FCZZ		AC		D	Energy star label (U.S.A,U.Kingdom,Europe,Australia,New Zealand)		
	TLABZ5148FCZZ	1	AC		D	Energy star label (Europe)		06/07
	TLABZ4312FCZZ		AE		D	Energy star label (Canada only)		
	TLABG0401QSZZ		AR		D	Energy star label (Hong kong only)		
53	LX-BZ3008SCPS		AA		C	Screw(3x8)		
54	TLABM0520QSZZ		AE		D	Imagery label (U.S.A,Canada)		
56	TLABS4070FCZZ		AC		D	Gost-R label (Europe)		
57	TLABS4770FCZZ		AD		D	Standard label (Europe)		
58	TLABH4771FCZZ		AF		D	Class 1 label (Europe)		
	TLABZ0105RSZZ		AD		D	LAG place origin label (LAG4)		
59	TCAUA0770FCZZ		AB		D	Service caution card (Except Europe)		
	TCAUH1047FCZZ		AD		D	Service caution card (Europe)		
60	LX-WZ1003HCZZ		AA		C	Poly slider(T=0.5)		
501	CCOVH0010RS56		BK		E	OC cover unit [Except AR-M205]		
502	CFIX-0024RS51		BD		E	Table unit [Except AR-1118]		

1 Exteriors



PRP03141

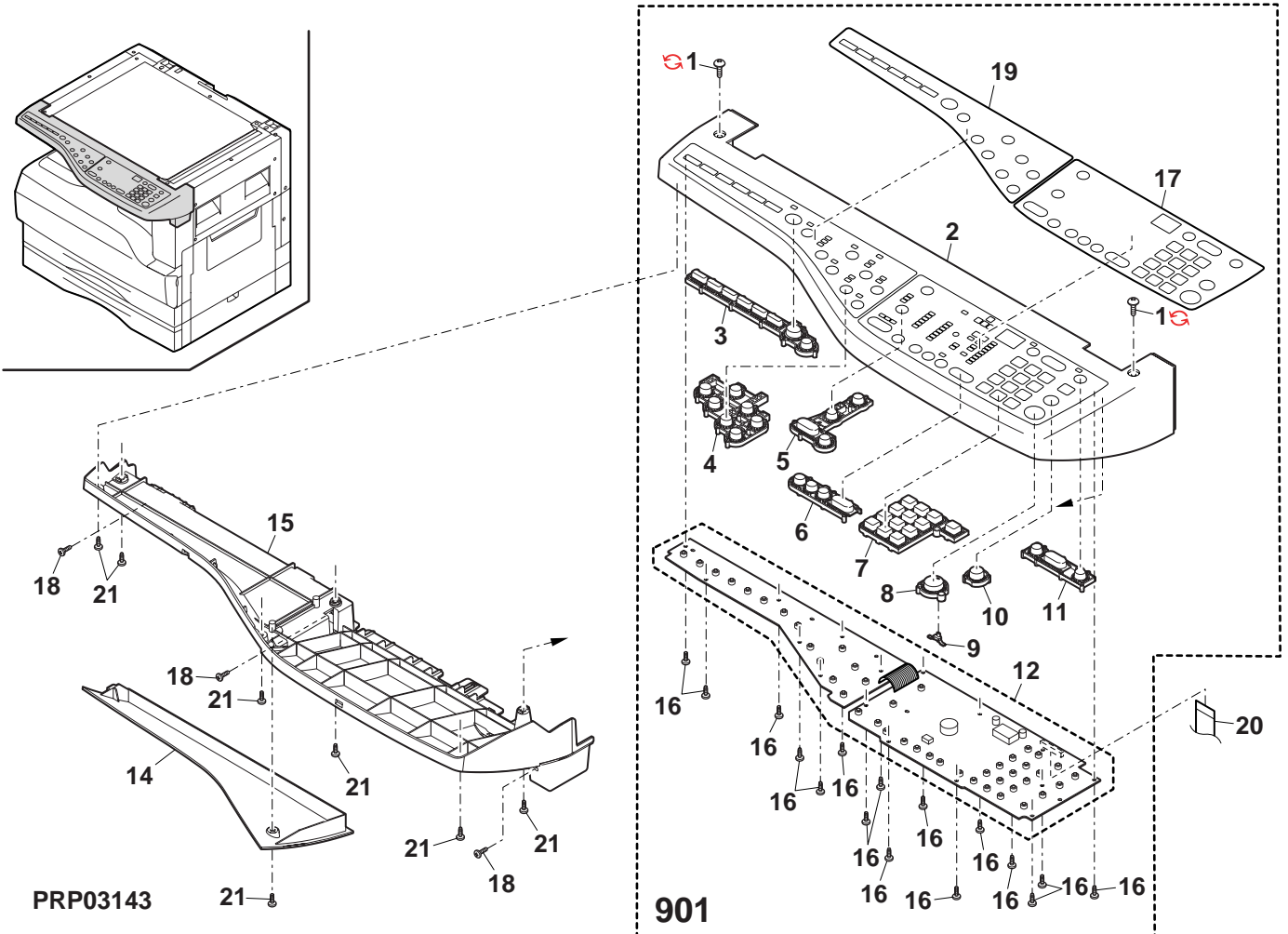
2 Operation panel section (AR-1118/AR-5316/AR-5320)



3 Operation panel section (AR-M160/AR-M205/AR-5220)

NO.	PARTS CODE	Inter-change	PRICE RANK	NEW MARK	PART RANK	DESCRIPTION	TR No.	Effective time
1	LX-BZ0750FCPZ		AA		C	Screw(3x6)		
	LX-BZ0088QSPZ	1	AA		C	Screw(3x6)		07/09
2	GCAB-0073QSZZ		AW		D	Operation panel cabinet		
3	CBTN-0067QS01		AG		C	Scanning key		
4	JBTN-0066QSZZ		AH		C	Special function key		
5	JBTN-0065QSZZ		AE		C	Mode select key		
6	JBTN-0064QSZZ		AF		C	Magnification key		
7	CBTN-0060QS01		AK		C	Ten key		
8	CBTN-0061QS01		AE		C	Start key AS		
9	PF i LZ0012QSZZ		AC		C	Start key filter		
10	CBTN-0062QS01		AF		C	CA key		
11	JBTN-0063QSZZ		AE		C	Zoom key		
12	DUNTK0353QSA6		BF		E	Operation PWB [AR-160M/AR-M160(Other Countries)]		
	DUNTK0353QSA4		BF		E	Operation PWB [AR-M160(U.S.A,Canada,U.kingdom,Europe)/AR-5220]		
	DUNTK0353QSA3		BF		E	Operation PWB [AR-M205(U.S.A,Canada,U.kingdom,Europe)]		
	DUNTK0353QSA2		BF		E	Operation PWB [AR-M205(Other Countries)]		
14	GCOV-0050QSZZ		AN		D	Operation panel cover		
15	GCAB-0067QSZZ		AX		D	Operation panel bottom		
16	XEBSD30P08000		AA		C	Screw(3x8)		
17	CPNLH0026QS13		AU		D	Main Deco. panel [AR-M160(U.S.A only)]		
	CPNLH0026QS02		AU		D	Main Deco. panel [AR-M205(U.S.A only)]		
	CPNLH0026QS03		AV		D	Main Deco. panel [AR-M205(Canada only)]		
	CPNLH0026QS15		BA		D	Main Deco. panel [AR-M160(U.kingdom only)]		
	CPNLH0026QS04		BA		D	Main Deco. panel [AR-M205(U.kingdom only)]		
	CPNLH0026QS16		AU		D	Main Deco. panel [AR-M160(Europe)]		
	CPNLH0026QS05		AV		D	Main Deco. panel [AR-M205(Europe)]		
	CPNLH0026QS20		BA		D	Main Deco. panel [AR-M160(Philippines only)]		
	CPNLH0026QS11		BA		D	Main Deco. panel [AR-M205(Philippines only)]		
	CPNLH0026QS19		BA		D	Main Deco. panel [AR-M160(Taiwan only)]		
	CPNLH0026QS10		BA		D	Main Deco. panel [AR-M205(Taiwan only)]		
	CPNLH0026QS08		AV		D	Main Deco. panel [AR-M160(Canada only)/AR-5220]		
	CPNLH0026QS18		AU		D	Main Deco. panel [AR-M160(Other Countries)]		
CPNLH0026QS09		AV		D	Main Deco. panel [AR-M205(Other Countries)]			
18	XHBSE30P08000		AA		C	Screw(3x8)		
19	CPNLH0027QS02		AT		D	DUP Deco. panel [AR-M205(U.S.A,U.kingdom)]		
	CPNLH0027QS03		AU		D	DUP Deco. panel [AR-M205(Other Countries)]		
	CPNLH0028QS02		AU		D	SIMP Deco. panel [AR-M160(U.S.A,U.kingdom)]		
	CPNLH0028QS03		AT		D	SIMP Deco. panel [AR-M160(Other Countries)/AR-5220]		
20	DHA i -0324QSZZ		AH		C	OP-MCU FFC harness		
21	XEBSE30P08000		AA		C	Screw(3x8)		
901	(Unit)							
	CCAB-0073RS52		BP		E	Operation panel unit(Without No.1) [AR-M160(U.S.A only)]		
	CCAB-0073RS53		BP		E	Operation panel unit(Without No.1) [AR-M160(Canada only)]		
	CCAB-0073RS54		BQ		E	Operation panel unit(Without No.1) [AR-M160(U.kingdom only)]		
	CCAB-0073RS55		BP		E	Operation panel unit(Without No.1) [AR-M160(Europe)]		
	CCAB-0073RS56		BP		E	Operation panel unit(Without No.1) [AR-M160(Australia only)]		
	CCAB-0073RS59		BP		E	Operation panel unit(Without No.1) [AR-M205(U.S.A only)]		
	CCAB-0073RS60		BQ		E	Operation panel unit(Without No.1) [AR-M205(Canada only)]		
	CCAB-0073RS61		BR		E	Operation panel unit(Without No.1) [AR-M205(U.kingdom only)]		
CCAB-0073RS62		BQ		E	Operation panel unit(Without No.1) [AR-M205(Europe)]			
CCAB-0073RS63		BQ		E	Operation panel unit(Without No.1) [AR-M205(Australia only)]			

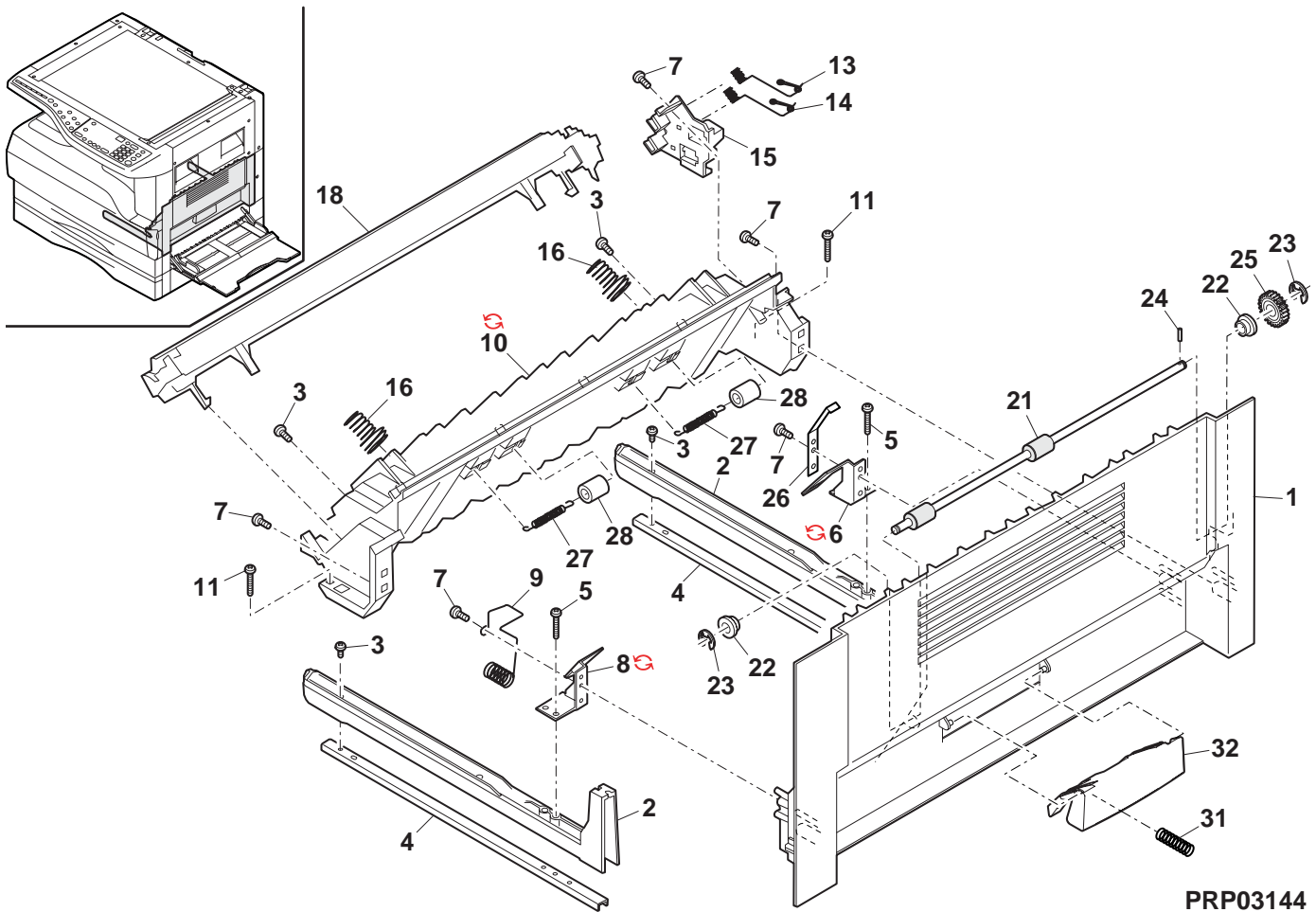
3 Operation panel section (AR-M160/AR-M205/AR-5220)



4 Side door unit

NO.	PARTS CODE	Inter-change	PRICE RANK	NEW MARK	PART RANK	DESCRIPTION	TR No.	Effective time
1	GDOR-0004QSZ1		AQ		D	Right door		
2	LRALP0004QSZ2		AH		C	Right door rail		
3	XHBS730P10000		AD		C	Screw(3x10)		
4	LPLTM0092QSZZ		AF		C	Rail reinforce plate		
5	XHBS730P14000		AA		C	Screw(3x14)		
6	LPLTM0091QSZZ		AE		C	Inner reinforce plate R		
6	LPLTM0091QSZ1	3	AE		C	Inner reinforce plate R	[Form change]	06/04 R/C
7	XEBS730P10000		AC		C	Screw(3x10)		
8	LPLTM0090QSZZ		AE		C	Inner reinforce plate F		
8	LPLTM0090QSZ1	3	AE		C	Inner reinforce plate F	[Form change]	06/04 R/C
9	MSPRC0085QSZZ		AE		C	TC case GND spring		
10	LFRM-0016QSZ5		AQ		C	Right door inner N		
10	LFRM-0016QSZ6	1	AQ		C	Right door inner N		06/04
11	XHBS730P16000		AA		C	Screw(3x16)		
13	MSPRC0084QSZ1		AD		C	BC I/F spring		
14	MSPRC0083QSZ1		AD		C	TC I/F spring		
15	LHLDZ0033QSZ1		AF		C	TC terminal I/F holder		
16	MSPRC0082QSZ1		AC		C	Pressure spring		
18	CHLDZ0030RS54		BA		E	TC case unit	[Except AR-1118]	
18	CHLDZ0030RS55		AY		E	TC case unit	[AR-1118]	
21	NROLP0036QSZZ		AP		C	DUP transport roller	[AR-M205]	
22	LBSHZ0303FCZZ		AC		C	M bushing C	[AR-M205]	
23	XRESP40-06000		AA		C	E type ring(E4)	[AR-M205]	
24	XPSSJ20-07000		AA		C	Spring pin	[AR-M205]	
25	NGERH0074QSZZ		AD		C	DUP roller driving gear	[AR-M205]	
26	LPLTM0102QSZZ		AD		C	DUP roller earth plate	[AR-M205]	
27	MSPRT0141GCA1		AB		C	FU PSV spring	[AR-M205]	
28	NROLP1122FCZZ		AF		C	PS upper roller	[AR-M205]	
31	MSPRC0319QSZZ		AB		C	Right door knob spring		
32	JKNBZ0008QSZZ		AE		C	Right door knob		
	(Unit)							
901	CDOR-0004RS51		BC		E	Side door unit(Without No.16,18)	[Except AR-M205]	
	CDOR-0004RS52		BD		E	Side door unit(Without No.16,18)	[AR-M205]	

4 Side door unit

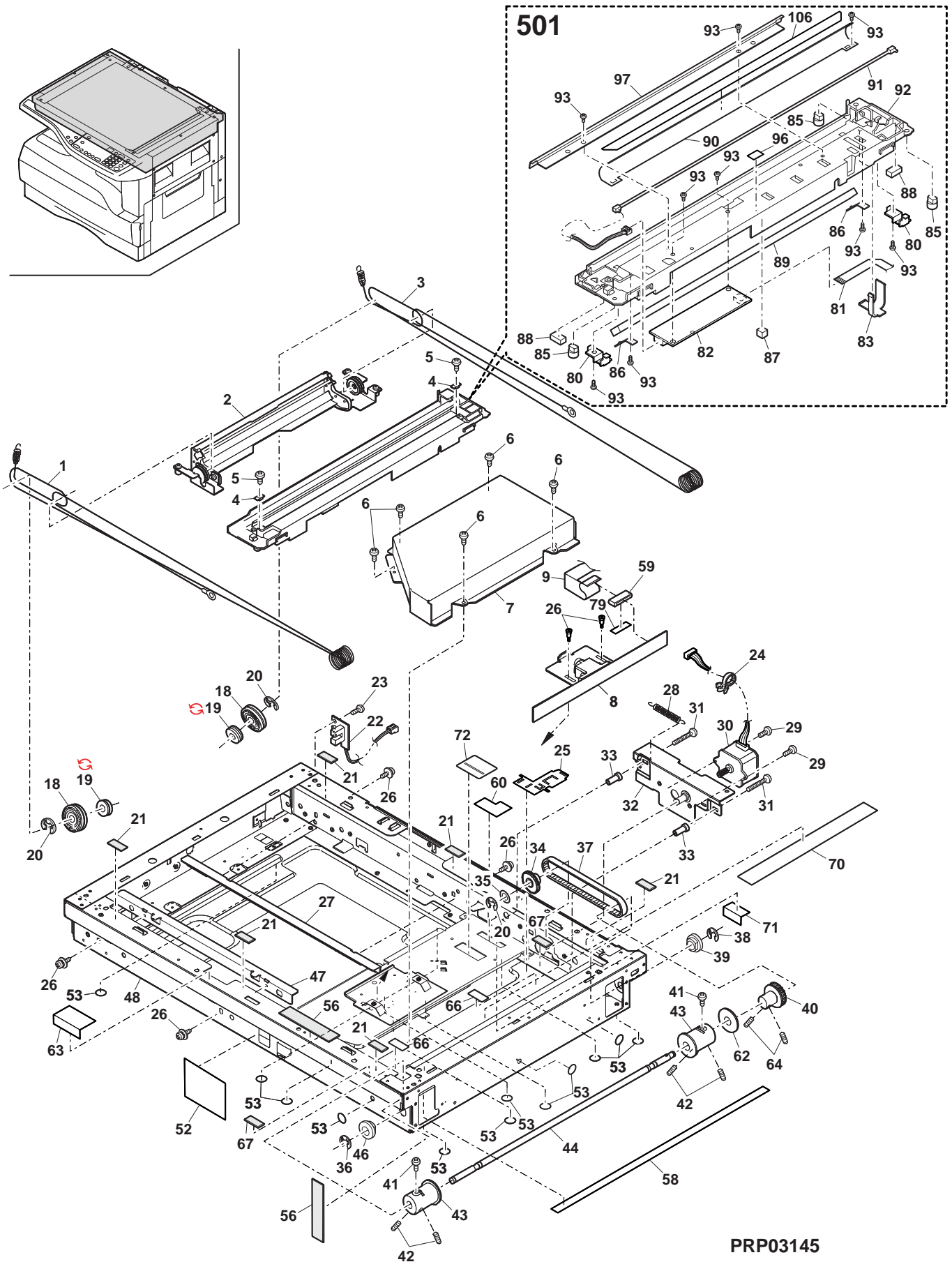


PRP03144

5 Optical unit

NO.	PARTS CODE	Inter-change	PRICE RANK	NEW MARK	PART RANK	DESCRIPTION	TR No.	Effective time
1	PWiR-0006QSPZ		AZ		C	MB wire F		
2	CMiR-0008QS37		BA		E	2nd,3rd mirror unit		
3	PWiR-0005QSP1		AZ		C	MB wire R		
4	LHLDZ0109QSZZ		AD		C	Wire holder		
5	XBPS740P06K00		AA		C	Screw(4x6K)		
6	XHBS730P06000		AC		C	Screw(3x6)		
7	PCASZ0010QSZZ		AL		C	Dark box		
8	CLNS-0007RS52		BP	N	E	Lens unit [AR-1118/AR-5316/AR-5320]		
	CLNS-0006RS51		BZ	N	E	Lens unit [AR-M160/AR-M205/AR-5220]		
9	DHAi-0342QSZZ		AG		C	CCD harness		
18	NPLYZ0016QSZZ		AF		C	Pulley		
19	NPLYZ0006QSZZ		AD		C	L pulley		
	NPLYZ0006QSZ1	1	AD	N	C	L pulley		06/12 R/C
20	XRESP40-05000		AA		C	E type ring(E4)		
21	PGUMS0004QSZZ		AA		C	Table glass cushion		
22	CPWBF0147QSF3		AL		E	MHPS PWB		
23	XBBS730P08000		AA		C	Screw(3x8)		
24	LBNDJ0043FCZ1		AA		C	Band(SG-130)		
25	LHLDZ0104QSZZ		AD		C	CL lead holder		
26	LX-BZ0004QSPZ		AB		C	Screw(3x63)(Red)		
27	LRALM0007QSZ1		AG		C	MB-B rail R		
28	MSPRC0040QSZZ		AB		C	MB drive spring		
29	XBPS730P05K00		AA		C	Screw(3x5K)		
30	RMOTS0041QSZZ		BA		B	Mirror motor		
31	XBPS740P16KS0		AB		C	Screw(4x16KS)		
32	CPLTM0312QS02		AK		C	Mirror motor fixing plate		
33	PGUMS0002QSZZ		AL		C	Protection rubber		
34	NGERH0165QSZZ		AE		C	Mirror motor idle gear		
35	LX-WZ0017GCZZ		AC		C	Washer		
36	XRESP70-08000		AA		C	E type ring(E7)		
37	NBLTT0037QSZZ		AL		B	Winder drive belt		
38	XRESP50-06000		AA		C	E type ring(E5)		
39	NBRGP0012QSZZ		AC		C	Winder bearing R		
40	NPLYZ0032QSZZ		AK		C	Winder drive shaft pulley		
41	LX-BZ0324FCPZ		AA		C	Screw(3x4)		
42	LX-BZ0049FCPZ		AB	N	C	Screw(4x6)		
43	NPLYZ0031QSZZ		AL		C	Winder pulley		
44	NSFTZ0071QSPZ		AQ		C	Winder drive shaft		
46	NBRGP0011QSZZ		AC		C	Winder bearing F		
47	LRALM0006QSZZ		AG		C	MB-B rail F		
48	CDAiU0012QS14		BF		D	Optical base plate		
52	PSHEZ0440QSZZ		AC		C	Optical front sheet		
53	PSHEZ0448QSZZ		AA		C	Optical base plate bottom sheet A		
56	PMLT-0033QSZZ		AC		C	Optical cushion D		
58	PSHEZ0152QSZZ		AD		C	Optical bottom sheet		
59	RCORF0018QSZZ		AR		C	Ferrite core		
60	PSHEZ0209QSZZ		AB		C	CCD harness protect sheet A		
62	LPFTF0004QSZZ		AB		C	Winder flange		
63	PSHEZ0418QSZZ		AC		C	Optical FR front sheet		
64	LX-BZ0039FCZZ		AB		C	Screw(4x4)		
66	PSHEZ0420QSZZ		AC		C	OP harness protect sheet		
67	PSHEZ0426QSZZ		AB		C	OP harness protect sheet B		
70	PTPE-0051QSZZ		AC		C	OP harness fixing tape		
71	PSHEZ0273QSZZ		AB		C	CCD harness sheet		
72	PSHEZ0217QSZZ		AC		C	CCD harness protect sheet B		
79	PTPE-0050QSZZ		AA		C	Core fixing tape		
80	LPLTM0314QSZZ		AC		C	Wire fixing plate		
81	DHAi-0332QSZZ		AE		C	CL harness		
82	RiNV-0002QSZZ		AU		B	Inverter		
83	LFiX-0023QSZZ		AC		C	Harness fixing plate		
85	MSLi-0138FCZZ		AC		E	Slider		
86	MSPRP2825FCZZ		AC		C	Mirror spring		
87	PCUSF0334FCZZ		AP		C	Mirror cushion		
88	PCUSU0203FCZZ		AE		C	Cushion		
89	PMiR-0164FCZZ		AP		B	1st mirror		
90	PREFL0005QSZZ		AH		C	Lamp reflector		
	RLMPD0034QSZZ		AS		B	Lamp [AR-5316/AR-5320]		
	RLMPD0032QSZZ		AZ		B	Lamp [AR-1118]		
	RLMPD0033QSZZ		AS		B	Lamp [AR-M160/AR-M205/AR-5220]		
92	LDAiU0030QSZZ		AS		C	Lamp base		
93	XEBS830P06000		AB		C	Screw(3x6)		
96	TLABZ4335FCZZ		AB		D	High pressure cautions label		
97	PREFL0006QSZ1		AK		C	Sub reflector		
106	PSHEZ0465QSZZ		AC		C	Lamp reflector sheet		
	CREFL0005RS54		BD	N	E	Copy lamp unit [AR-5316/AR-5320]		
	CREFL0005RS52		BH	N	E	Copy lamp unit [AR-1118]		
	CREFL0005RS51		BH	N	E	Copy lamp unit [AR-M160/AR-M205/AR-5220]		

5 Optical unit

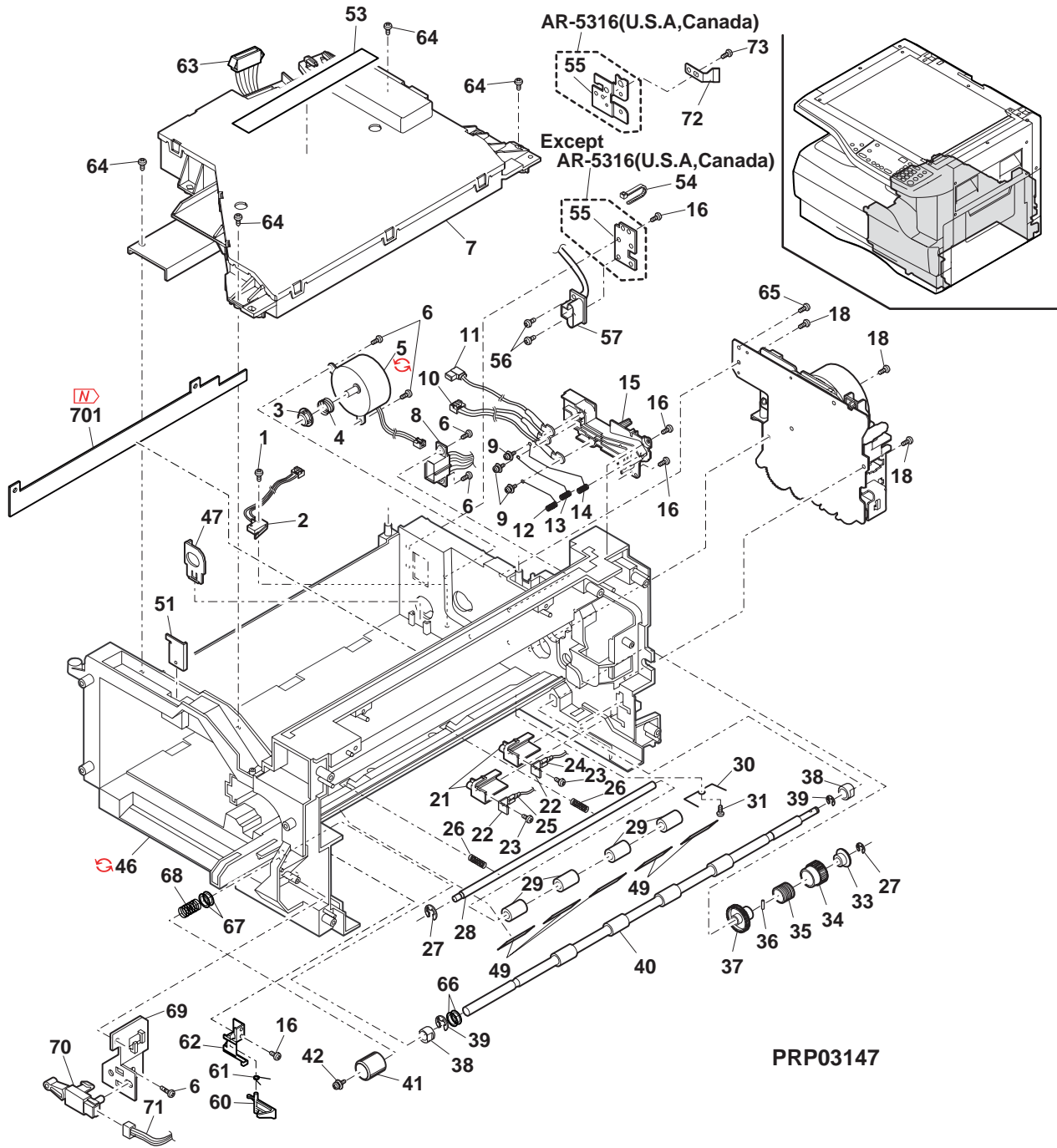


PRP03145

7 Middle frame unit

NO.	PARTS CODE	Inter-change	PRICE RANK	NEW MARK	PART RANK	DESCRIPTION	TR No.	Effective time
1	XEPS723P12000		AA		C	Screw(2.3x12)		
2	CSW-M0007RS55		AS		B	Interlock switch unit		
3	NCPL-0002QSZZ		AC		C	Hopper coupling [AR-5316(U.S.A,Canada)]		
	NCPL-0007QSZZ		AC		C	Hopper coupling [Except AR-5316(U.S.A,Canada)]		
4	MSPRC0024QSZZ		AA		C	Hopper spring		
	RMOTD0016QSZ1		AZ		B	Toner motor [AR-5316(U.S.A,Canada)]		
	RMOTD0035QSPZ		AX		B	Toner motor [AR-1118]		
5	RMOTD0035QSP1	1	AZ		B	Toner motor [AR-1118]		06/08 R/C
	RMOTD0035QSZZ		AN		B	Toner motor [Except AR-1118/AR-5316(U.S.A,Canada)]		
	RMOTD0035QSP1	1	AZ		B	Toner motor [Except AR-1118/AR-5316(U.S.A,Canada)]		06/08 R/C
6	XEBS730P10000		AC		C	Screw(3x10)		
7	DUNTK0343RS12		BR		E	LSU[Include No.101] [AR-1118]		
	DUNTK0343RSZZ		BV		E	LSU[Include No.101] [Except AR-1118]		
8	DHAi-0435QSZZ		AQ		C	DEV harness [AR-5316(U.S.A,Canada)]		
	DHAi-0322QSZZ		AS		C	DEV harness [Except AR-5316(U.S.A,Canada)]		
9	XBPS30P06ES0		AA		C	Screw(3x6ES)		
10	CHAi-0109RS52		AN		C	GB-MCFB harness unit		
11	CHAi-0107RS52		AM		C	MC harness unit		
12	MSPRD0104QSZZ		AC		C	HV terminal spring (case)		
13	MSPRD0103QSZZ		AC		C	HV terminal spring (grid)		
14	MSPRD0102QSZZ		AC		C	HV terminal spring (saw)		
15	LHLDZ0038QSC1		AH		C	High voltage terminal holder [AR-5316(U.S.A,Canada)]		
	LHLDZ0038QSZ1		AH		C	High voltage terminal holder [Except AR-5316(U.S.A,Canada)]		
16	XEBS730P08000		AC		C	Screw(3x8)		
18	XEBS730P10000		AC		C	Screw(3x10)		
21	LHLDZ0039QSZZ		AE		C	High voltage terminal holder TC		
22	LPLTM0067QSZZ		AC		C	TC terminal plate		
23	XEBS730P06000		AA		C	Screw(3x6)		
24	DHAi-0106QSZZ		AK		C	BC harness		
25	DHAi-0108QSZZ		AH		C	TC harness		
26	MSPRC0278QSZZ		AC		C	PS pressure spring		
27	XRESP40-06000		AA		C	E type ring(E4)		
28	NSFTZ0021QSP1		AN		C	PS roller shaft		
29	NKOM-0001QSZZ		AD		C	PS collar(φ12)		
30	MSPRD0139QSZZ		AB		C	PS earth spring		
31	XEBS730P06000		AA		C	Screw(3x6)		
33	LBOSZ1508FCZZ		AG		C	Cam boss A2		
34	PPiPP0174FCZZ		AC		C	Pipe C		
35	MSPRC0106QSZZ		AF		C	PS clutch spring		
36	XPSSJ20-07000		AA		C	Spring pin(φ2-7)		
37	NGERH0062QSZZ		AK		C	Clutch gear(32T)		
38	NBRGC0018QSZZ		AD		C	Bearing E		
39	XRESP60-08000		AA		C	E type ring(E6)		
40	NROLP0032QSP2		AT		C	PS transport roller		
41	JKNBZ0010QSZZ		AD		C	PS knob		
42	XBPS730P10KS0		AB		C	Screw(3x10KS)		
	LFRM-0024QSZZ		BC		C	Middle frame		
46	LFRM-0024QSZ5	5	BA		C	Middle frame [With No.701,10-63,701]	DCE582	05/08
	LFRM-0024QSZ7	1	BC	N	C	Middle frame		06/08 R/C
47	LPI NS0007QSZZ		AC		C	DV guide pin [AR-5316(U.S.A,Canada)]		
	LPI NS0301FCZZ		AD		C	DV guide pin (AB series)		
	LPI NS0300FCZZ		AD		C	DV guide pin (Inch series)		
49	PSHEZ0056QSZZ		AC		C	PS rear guide sheet		
51	LANGT0003QSZZ		AC		C	SRU fixing angle [Except AR-5316(U.S.A,Canada)/AR-M205]		
53	TCAUH0021QSZZ		AD		D	Laser caution label (Taiwan)		
	TCAUH0007QSZZ		AD		D	Laser caution label (Other Countries)		
54	LBNDJ0013FCZZ		AE		C	Cable band		
55	LPLTM0302QSZZ		AC		C	CRUM fixing plate [AR-5316(U.S.A,Canada)]		
	LPLTM0149QSZZ		AD		C	Connector fixing plate [Except AR-5316(U.S.A,Canada)]		
56	LX-BZ0020QSPZ		AB		C	Screw		
57	DHAi-0333QSZZ		AL		C	SRU harness		
60	LSTPP0014QSZZ		AC		C	Right door stopper		
61	MSPRD0298QSZZ		AD		C	Stopper spring		
62	LHLDZ0099QSZZ		AC		C	Stopper holder		
63	DHAi-0321QSZZ		AH		C	LSU harness		
64	XEPS730P14X00		AB		C	Screw(3x14X)		
65	XHBS730P06000		AC		C	Screw(3x6)		
66	LX-WZ0198FCZZ		AA		C	Poly slider(T=0.13)		
67	LX-WZ1003HCZZ		AA		C	Poly slider(T=0.5)		
68	MSPRC0339QSZZ		AD		C	PS brake spring		
69	LPLTM0070QSZZ		AD		C	Process detect SW fixing plate [AR-5316(U.S.A,Canada)]		
70	QSW-B0017QSZZ		AF		B	Tray detect switch [AR-5316(U.S.A,Canada)]		
71	DHAi-0334QSZZ		AG		C	DRUM SW harness [AR-5316(U.S.A,Canada)]		
72	MSPRP0299QSZZ		AC		C	CRUM fixing spring [AR-5316(U.S.A,Canada)]		
73	XBBS730P06000		AC		C	Screw(3x6) [AR-5316(U.S.A,Canada)]		
101	RMOTN0022QSPZ		BL		B	Polygon motor[Contained in No.7]		
701	LPLTM0389QSZZ	5	AK		C	Fusing fixing plate [With No.46,10-63,701]		05/08

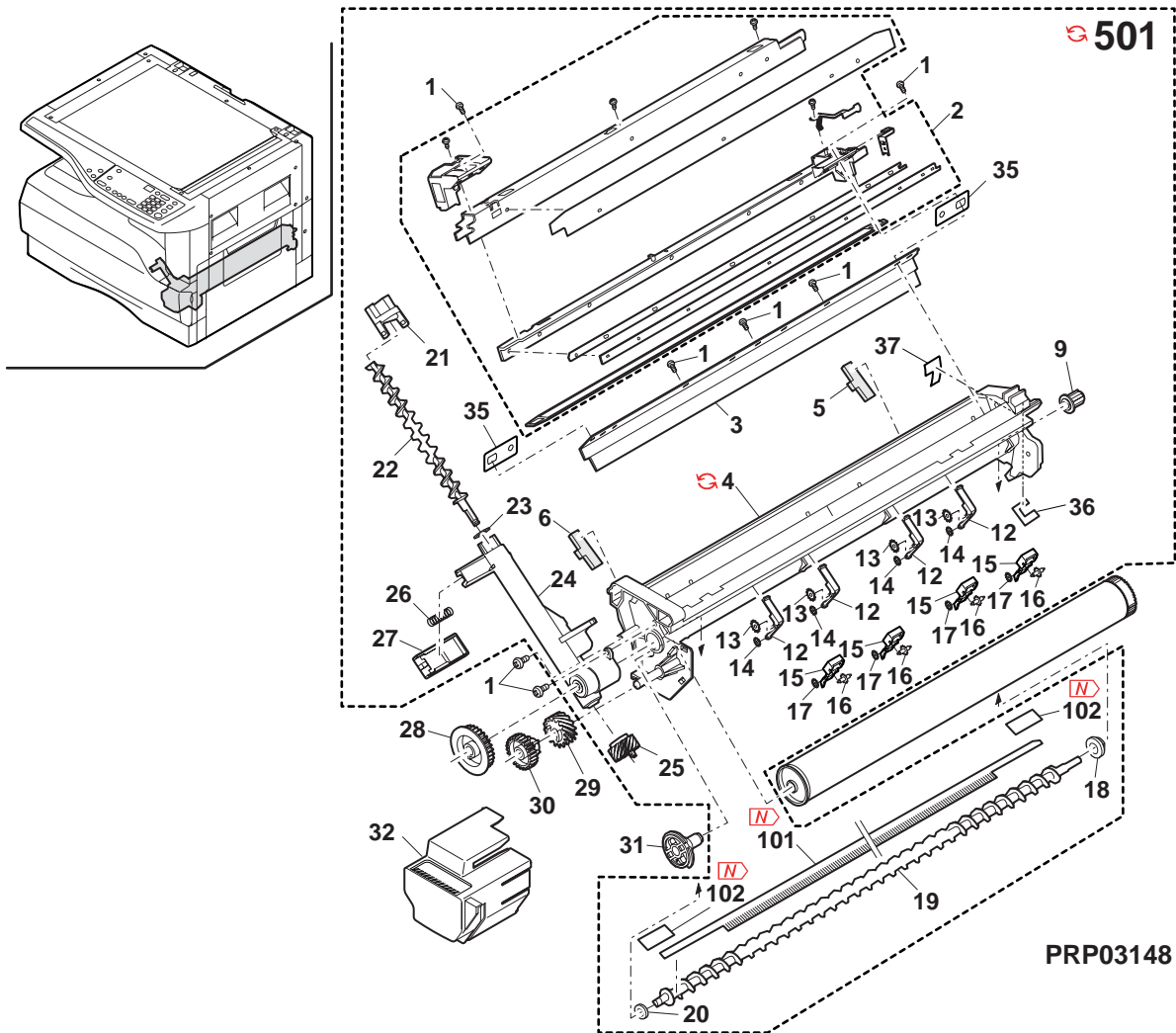
7 Middle frame unit



8 Process unit

NO.	PARTS CODE	Inter-change	PRICE RANK	NEW MARK	PART RANK	DESCRIPTION	TR No.	Effective time
1	XEBS730P10000		AC		C	Screw(3x10)		
2	CHLDZ0035RS55		BG		E	MC holder unit		
3	UCLEZ0009QSZ2		AQ		A	Cleaning blade		
4	CFRM-0021RS6Q		AZ	N	E	Process sub unit [AR-5316(U.S.A,Canada)]		
	CFRM-0021RS6X	3	AY		E	Process sub unit [AR-5316(U.S.A,Canada)]	DCE608	06/09
	CFRM-0021RS6F		BF		E	Process sub unit [AR-5316(Australia,New Zealand)/(SRS,SRSSC,Indonesia)]		
	CFRM-0021RS6R	3	AX		E	Process sub unit [AR-5316(Australia,New Zealand,SRS,SRSSC,Indonesia)]	DCE608	06/09
	CFRM-0021RS6M		AY		E	Process sub unit [AR-1118]		
	CFRM-0021RS6R	3	AX		E	Process sub unit [AR-1118]	DCE608	06/09
	CFRM-0021RS61		AY		E	Process sub unit (Other Countries)		
5	PSEL-0130QSZZ		AF		C	Seal R		
6	PSEL-0129QSZZ		AF		C	Seal F		
9	NCPL-0003QSZ1		AC		C	Screw coupling		
12	LHLDZ0045QSZZ		AD		C	Starling holder [AR-5316(U.S.A,Canada)/AR-M160/AR-M205/AR-5220]		
	LHLDZ0098QSZZ		AD		C	Pawl holder [Except AR-5316(U.S.A,Canada)/AR-1118/AR-5320]		
13	LX-WZ0329FCZZ		AB		C	Washer [AR-5316(U.S.A,Canada)/AR-M160/AR-M205/AR-5220]		
14	LX-RZ0001QSZZ		AB		C	Starling(φ5) [AR-5316(U.S.A,Canada)/AR-M160/AR-M205/AR-5220]		
15	PTME-0033QSZZ		AK		A	Separator pawl [Except AR-5316(U.S.A,Canada)/AR-1118/AR-5320]		
16	PRNGF0106FCZZ		AC		C	Starling N2 [Except AR-5316(U.S.A,Canada)/AR-1118/AR-5320]		
17	LX-RZ0001QSZZ		AB		C	Starling(φ5) [Except AR-5316(U.S.A,Canada)/AR-1118/AR-5320]		
18	NBRGP0299FCPZ		AD		C	CL bearing(M5)		
19	NSFTZ0020QSZZ		AL		C	Transport screw		
20	PMLT-0018QSZ1		AC		C	Transport screw cushion		
21	PCAPH0009QSZZ		AC		C	Toner pipe cap		
22	NSFTZ0019QSZZ		AE		C	Transport pipe screw		
23	PSPAZ0696FCZZ		AC		C	Pipe cap spacer		
24	PPiPP0005QSZZ		AM		C	Toner pipe		
25	NGERH0039QSZZ		AE		C	Transport pipe gear(14T)		
26	MSPRC0045QSZZ		AA		C	Toner pipe spring		
27	PSHT-0004QSZ1		AC		C	Toner pipe shutter		
28	NGERH0036QSZZ		AC		C	Transport screw gear(30T)		
29	NGERH0038QSZZ		AC		C	Transport pipe gear(15T)		
30	NGERH0037QSZZ		AC		C	Idle gear(26T)		
31	LFiX-0007QSZ1		AE		C	Drum fixing plate B		
32	PCOVP0093QSZZ		AE		C	Drum cover		
35	PSHEP0135QSZ1		AB		C	MC guide sheet R		
36	PSHEZ0501QSZZ		AD		C	Drum MG sheet A (Except Australia,New Zealand)		
37	PSHEZ0502QSZZ		AD		C	Drum MG sheet B (Except Australia,New Zealand)		
101	PSHEZ0513QSZZ	3	AK		C	Paper dust stirring sheet	DCE608	06/02
102	PTPE-0026QSZZ	3	AA		C	Screw tape	DCE608	06/02
501	CFRM-0021RS5Q		BE	N	E	Process frame unit [AR-5316(U.S.A,Canada)]		
	CFRM-0021RS5X	3	BF		E	Process frame unit [AR-5316(U.S.A,Canada)]	DCE608	06/09
	CFRM-0021RS6G		BF		E	Process frame unit [AR-5316(Australia,New Zealand)/(SRS,SRSSC,Indonesia)]		
	CFRM-0021RS5R	3	BH		E	Process frame unit [AR-5316(Australia,New Zealand,SRS,SRSSC,Indonesia)]	DCE608	06/09
	CFRM-0021RS6N		BF		E	Process frame unit [AR-1118]		
	CFRM-0021RS5R	3	BH		E	Process frame unit [AR-1118]	DCE608	06/09
	CFRM-0021RS6D		BG		E	Process frame unit (Other Countries)		
	CFRM-0021RS5T	3	BF		E	Process frame unit (Other Countries)	DCE608	06/09

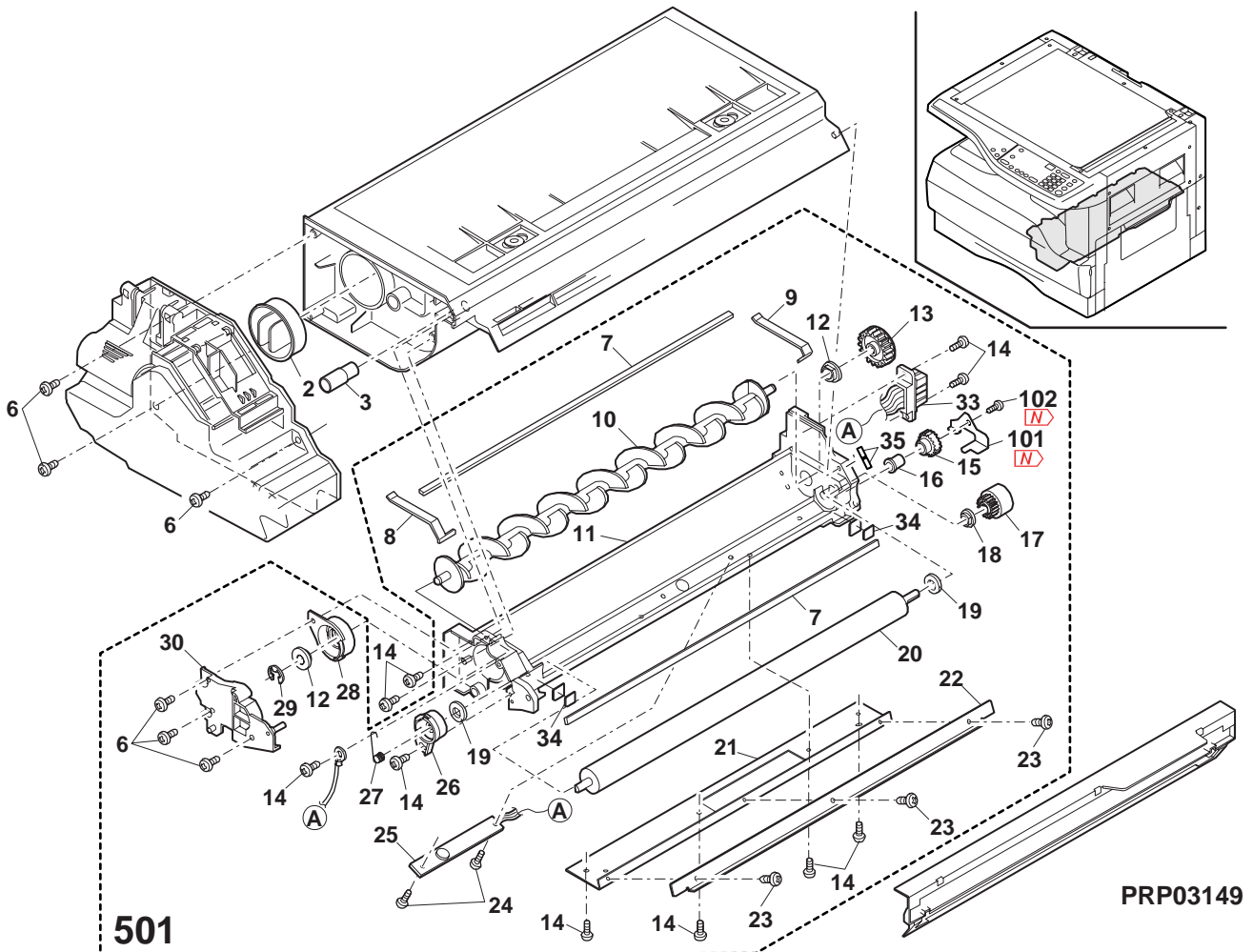
8 Process unit



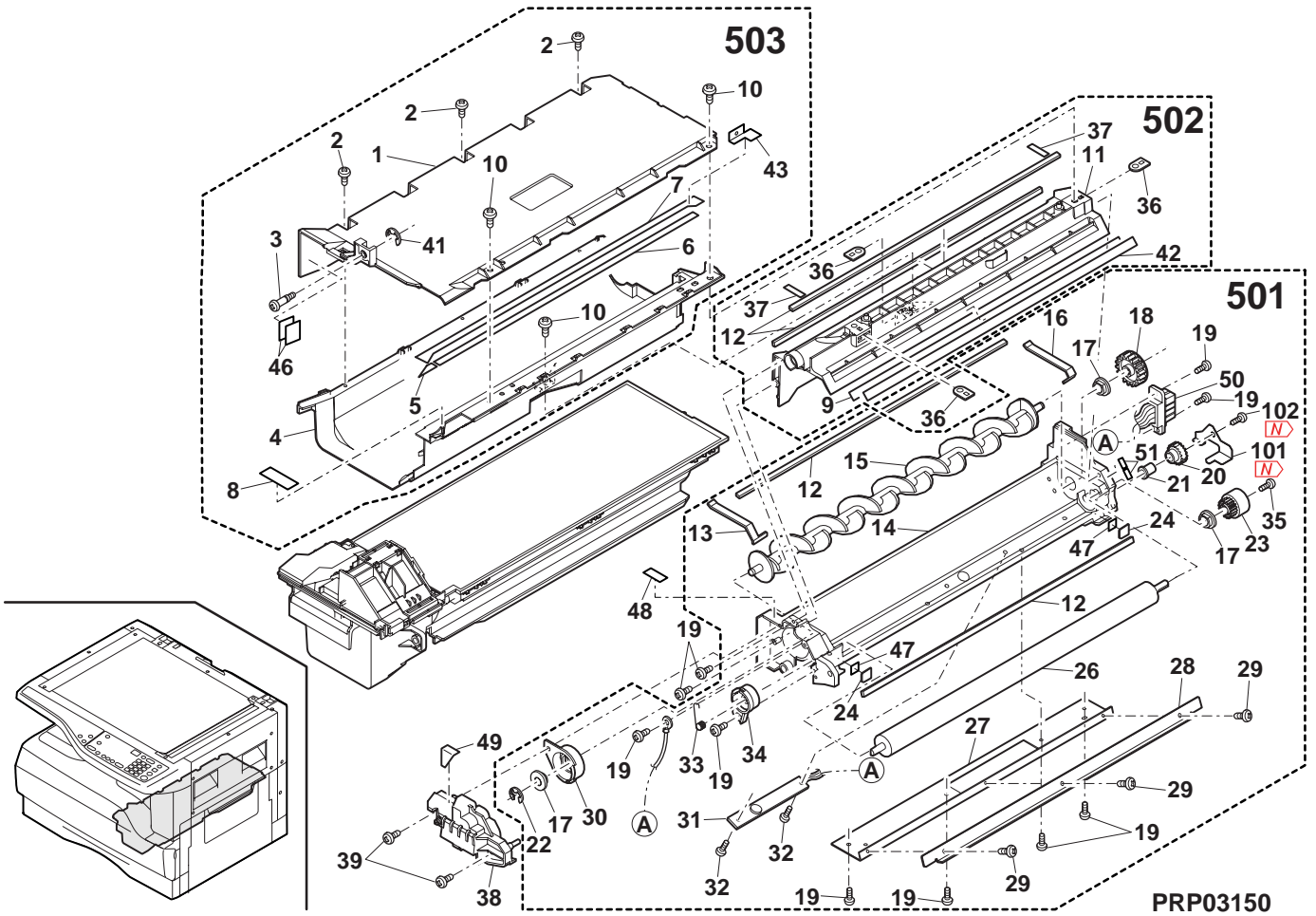
9 DV cartridge unit (AR-5316 U.S.A,Canada)

NO.	PARTS CODE	Inter-change	PRICE RANK	NEW MARK	PART RANK	DESCRIPTION	TR No.	Effective time
2	PCAPH0005YSZZ		AD		C	Toner cap		
3	PCAPH0004YSZZ		AC		C	Cap D		
6	XEBS730P10000		AC		C	Screw(3x10)		
7	PMLT-0002YSZ1		AC		C	DV TH cushion		
8	PMLT-0005YSZZ		AB		C	DV side cushion F		
9	PMLT-0006YSZZ		AB		C	DV side cushion R		
10	NROLM0001YSPZ		AP		C	MX roller		
11	PBOX-0001YS12		AM		D	DV box		
12	NBRGC0020QSZZ		AH		C	DV bearing		
13	NGERH0002YSZZ		AD		B	DV gear(28T)		
14	XEBS730P08000		AC		C	Screw(3x8)		
15	NGERH0001YSZZ		AD		C	DV idle gear(20T)		
16	NBRGC0021QSZZ		AD		C	DID bearing		
17	NGERH0028QSZZ		AD		B	DV gear(18T)		
18	NBRGC0387FCZ1		AC		C	Bearing		
19	PMLT-0686FCZZ		AA		C	MG cushion		
20	NROLM0002YSZZ		BA		B	MG roller		
21	LPLTM0002YSZ2		AP		C	Doctor reinforce plate		
22	LPLTM0001YSZZ		AN		B	Doctor		
23	XBPBZ30P04000		AA		C	Screw(3x4)		
24	XUBUZ30P08000		AA		C	Screw(3x8)		
25	RDTCM0017QSZZ		AY		B	ATC sensor		
26	LHLDZ0002YSZZ		AC		C	MG holder		
27	MSPRK0001YSZZ		AB		C	Bias spring		
28	LHLDZ0001YSZZ		AD		C	Bearing holder		
29	XRESP50-06000		AA		C	E type ring(E5)		
30	PCOVP0001YSZZ		AE		C	DV-F side cover		
33	DHAi-0313QS11		AH		C	Sensor harness		
34	PSHEP0035YSZZ		AB		A	DV side sheet N		
35	PSHEG0504QSZZ		AD		C	Sheet		
101	LANGK0018QSZZ	-	AD		C	Reinforcing	DCE625	05/07 mid
102	LX-EZ0001QSZZ	-	AB		C	Screw	DCE625	05/07 mid
501	CBOX-0001JS5J		BL	N	E	DV box unit		

9 DV cartridge unit (AR-5316 U.S.A,Canada)



10 DV cartridge unit (Except AR-5316 U.S.A,Canada)



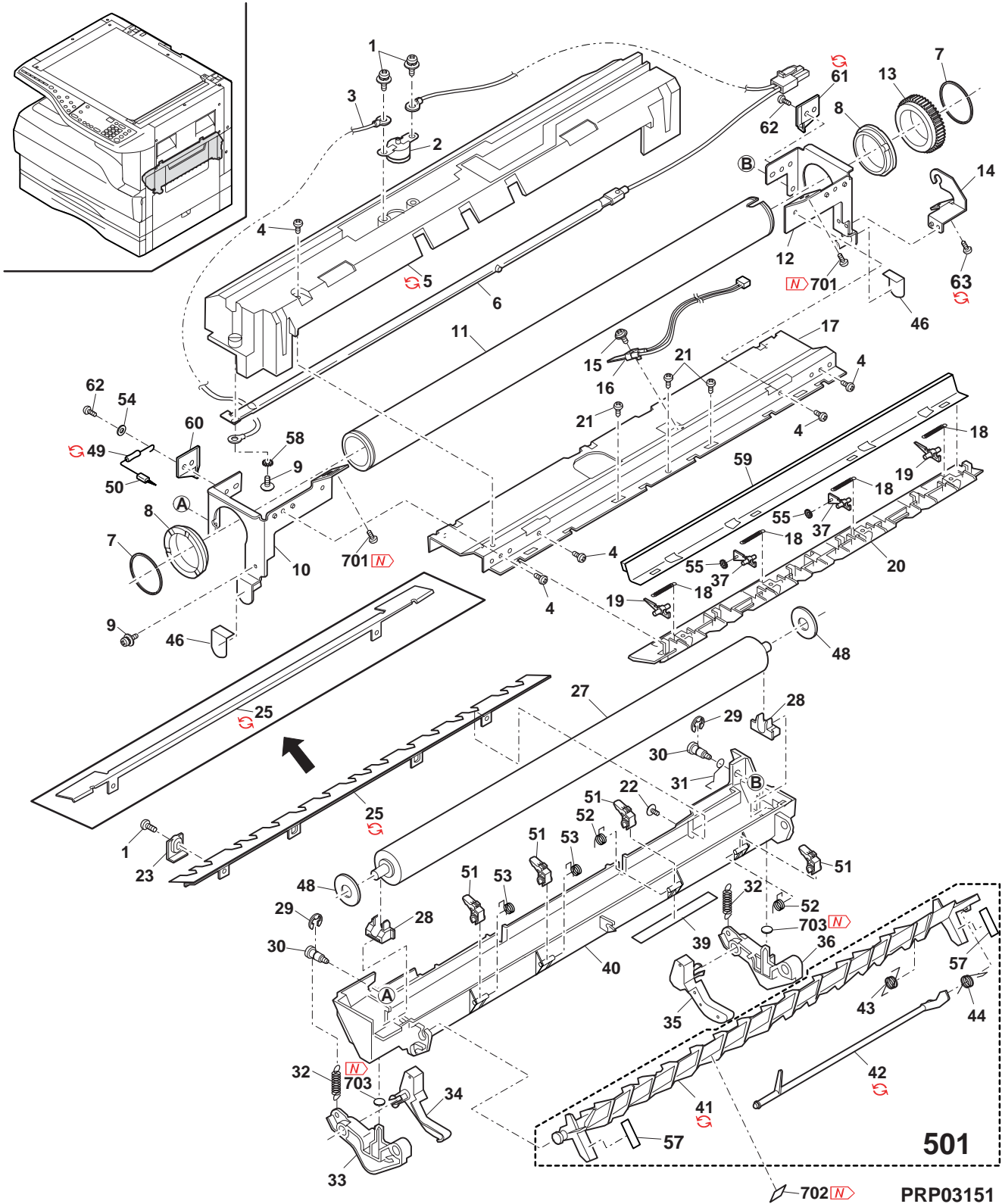
11 Fusing unit

NO.	PARTS CODE	Inter-change	PRICE RANK	NEW MARK	PART RANK	DESCRIPTION	TR No.	Effective time
1	XBPS730P06KS0		AB		C	Screw(3x6KS)		
2	RTHM-0001QSZZ		AM		B	Thermostat		
3	DHAi-0184QSZ1		AE		C	Fusing harness		
4	XHBS730P06000		AC		C	Screw(3x6)		
5	PCOVP0029QSZ5		AT		D	Fusing cover [AR-1118/AR-5316/AR-5320]		
	PCOVP0029QSZ6		AT		D	Fusing cover [AR-M160/AR-M205/AR-5220]		
	PCOVP0029QSZ7	1	AT		D	Fusing cover [AR-M160/AR-M205/AR-5220]		07/06 R/C
6	RLMPU0014QSZZ		BA		B	Heater lamp (100V series)		
	RLMPU0018QSZZ		BA		B	Heater lamp (110V series)		
	RLMPU0015QSZZ		BA		B	Heater lamp (120V series)		
	RLMPU0016QSZZ		BA		B	Heater lamp (230V series)		
7	LSTPP0116FCZZ		AA		C	Roller stopper		
8	NBRGP0567FCZZ		AG		A	Fusing bearing		
9	XBPS730P08KS0		AB		C	Screw(3x8KS)		
10	CFRM-0017QS01		AH		C	Fusing frame F		
11	NR0Li0030QSZZ		BC		A	Upper heat roller		
12	CFRM-0018QS01		AH		C	Fusing frame R		
13	NGERH0540FCZ3		AD		B	Fusing gear(45T)		
14	LHLDZ0034QSZZ		AF		C	Lamp holder		
15	XBPS730P10KS0		AB		C	Screw(3x10KS)		
16	RDTCT0005QSZ1		AN		B	Thermistor		
17	LPLTM0050QSZ1		AM		C	Fusing joint plate		
18	MSPRT0086QSZZ		AB		C	Upper pawl pressure spring		
19	PTME-0020GCZ1		AF		A	Separator pawl		
20	PGiDM0034QSZ6		AL	N	C	Fusing rear paper guide		
21	XEBS730P06000		AA		C	Screw(3x6)		
22	XBBS730P06000		AC		C	Screw(3x6)		
23	LPLTP0051QSZZ		AD		C	PG fixing plate		
25	CGiDH0033RS51		AU		C	Fusing front paper guide (Other Countries)		
	PGiDH0131QSZZ	5	AU		C	Fusing front paper guide [Improvement in reliability sake] (Other Countries)	DCE506	04/08
	PGiDH0131QSZ1	1	AU		C	Fusing front paper guide (Other Countries)	DCE562	04/12 R/C
	PGiDH0131QSZ2	1	AU		C	Fusing front paper guide (Other Countries)		06/07
	PGiDH0131QSZ1		AU		C	Fusing front paper guide [AR-1118/AR-5316(U.S.A,Canada,Australia,New Zealand)]		
	PGiDH0131QSZ2	1	AU		C	Fusing front paper guide [AR-1118/AR-5316(U.S.A,Canada,Australia,New Zealand)]		06/07
27	NR0LR0031QSP1		BB		A	Pressure roller		
28	NBRGP0260FCZ1		AD		C	Pressure bearing N		
29	XRESP30-06000		AA		C	E type ring(E3)		
30	LX-BZ0013QSP1		AD		C	Screw(3x7)		
31	MSPRP0087QSZZ		AC		C	PG earth spring		
32	MSPRT0303QSZZ		AD		C	Pressure spring B		
33	MLEVP0018QSZ1		AF		C	Fusing pressure lever F		
34	MLEVP0019QSZ3		AE		C	Release lever F		
35	MLEVP0020QSZ3		AE		C	Release lever R		
36	MLEVP0017QSZ1		AF		C	Fusing pressure lever R		
37	PTME-0020GCZ1		AF		A	Separator pawl		
39	TLABH0062QSZZ		AE		D	High temperature caution label		
40	LFRM-0036QSZ2		AS		C	Fusing lower frame		
41	LPLTP0060QSZ4		AM	N	C	Reverse gate		
	LPLTP0060QSZ5	1	AM	N	C	Reverse gate		06/04
42	MLEVP0026QSZ2		AE		C	DMC actuator		
	MLEVP0026QSZ3	1	AE	N	C	DMC actuator		06/06 R/C
43	MSPRD0117QSZZ		AB		C	Rotation spring		
44	MSPRD0118QSZ1		AB		C	Actuator return spring		
46	PSHEZ0105QSZZ		AC		C	Fusing sheet		
48	LX-WZ0313FCZZ		AA		C	Washer		
49	VRH-ST2HB157K		AD		C	Resistor(1/2W 150MΩ ±10%)		
	VRHRST2HB157K	3	AD		C	Resistor(1/2W 150MΩ ±10%) [Unleaded solder correspondence]		06/03
50	PBRSR0004QSZ1		AD		B	Discharge brush		
51	PTME-0014QSZZ		AK		A	Lower separator pawl		
52	MSPRD0122QSZZ		AB		C	Separator pawl spring R		
53	MSPRD0121QSZZ		AB		C	Separator pawl spring F		
54	XWHS730-05070		AA		C	Washer		
55	LX-WZ0001QSZZ		AC		C	Separator pawl washer		
57	TLABH0364QSZZ		AA		D	Green label		
58	LX-WZ7021SCPZ		AA		C	Washer		
59	CPLTM0255QS01		AS		C	FU felt fixing plate		
60	PGiDM0102QSZZ		AD		C	Fusing front guide F [Except AR-5316(U.S.A,Canada)/(Saudi Arabia)]		
	PGiDM0103QSZZ		AD		C	Fusing front guide R [Except AR-5316(U.S.A,Canada)/(Saudi Arabia)]		
61	PGiDM0103QSZ1	3	AD		C	Fusing front guide R [Productivity improvement] [Except AR-5316(U.S.A,Canada)/(Saudi Arabia)]		07/01 R/C
62	XHBS730P08000		AB		C	Screw(3x8)		
63	XEBS740P12000		AA		C	Screw(4x12)		
	XEBS740P14000	5	AB		C	Screw(4x14) [With No.701,7-46,7-701]		05/08
501	CPLTP0060RS52		AR		E	Reverse gate unit		
701	LX-BZ0080QSZZ	5	AC		C	Fusing fixing screw [With No.63,7-46,7-701]		05/08
702	TLABH0685QSZZ	-	AD		D	High temperature caution label	DCE622	06/09
703	PSPA Z0054QSZZ	-	AF		C	Mylar sheet	DCE644	-

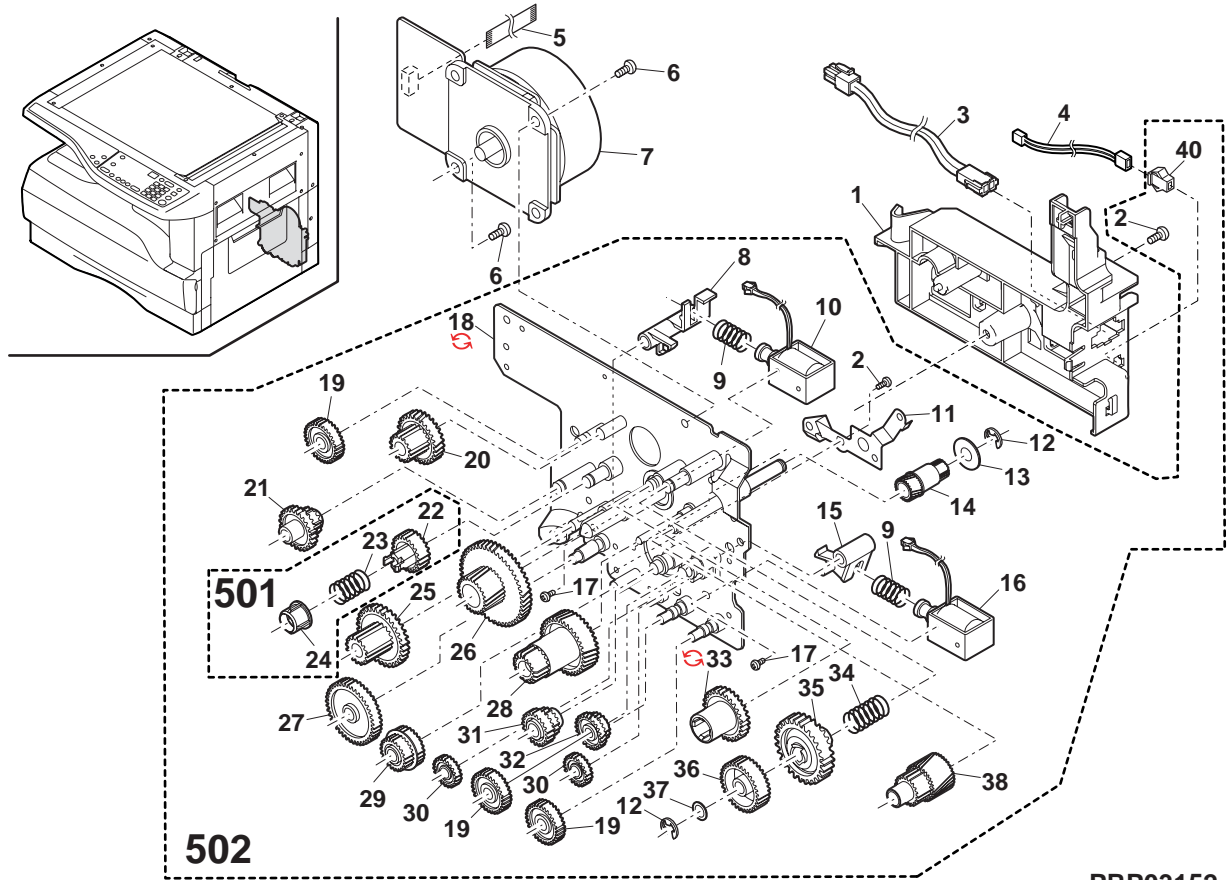
11 Fusing unit

NO.	PARTS CODE	Inter-change	PRICE RANK	NEW MARK	PART RANK	DESCRIPTION	TR No.	Effective time
	(Unit)							
	DUNTW0327RS14		BV		E	Fusing unit (110V series)		
	DUNTW0327US14	1	BW	N	E	Fusing unit (110V series)		07/06
	DUNTW0327RSZZ		BV		E	Fusing unit (120V series)		
	DUNTW0327USZZ	1	BW	N	E	Fusing unit (120V series)		07/06
	DUNTW0524RS12		BV		E	Fusing unit [AR-1118]		
	DUNTW0524US12	1	BV	N	E	Fusing unit [AR-1118]		07/06
	DUNTW0327RS12		BV		E	Fusing unit (230V series)		
	DUNTW0327US12	1	BW		E	Fusing unit (230V series)		07/06

11 Fusing unit



12 Main driving unit

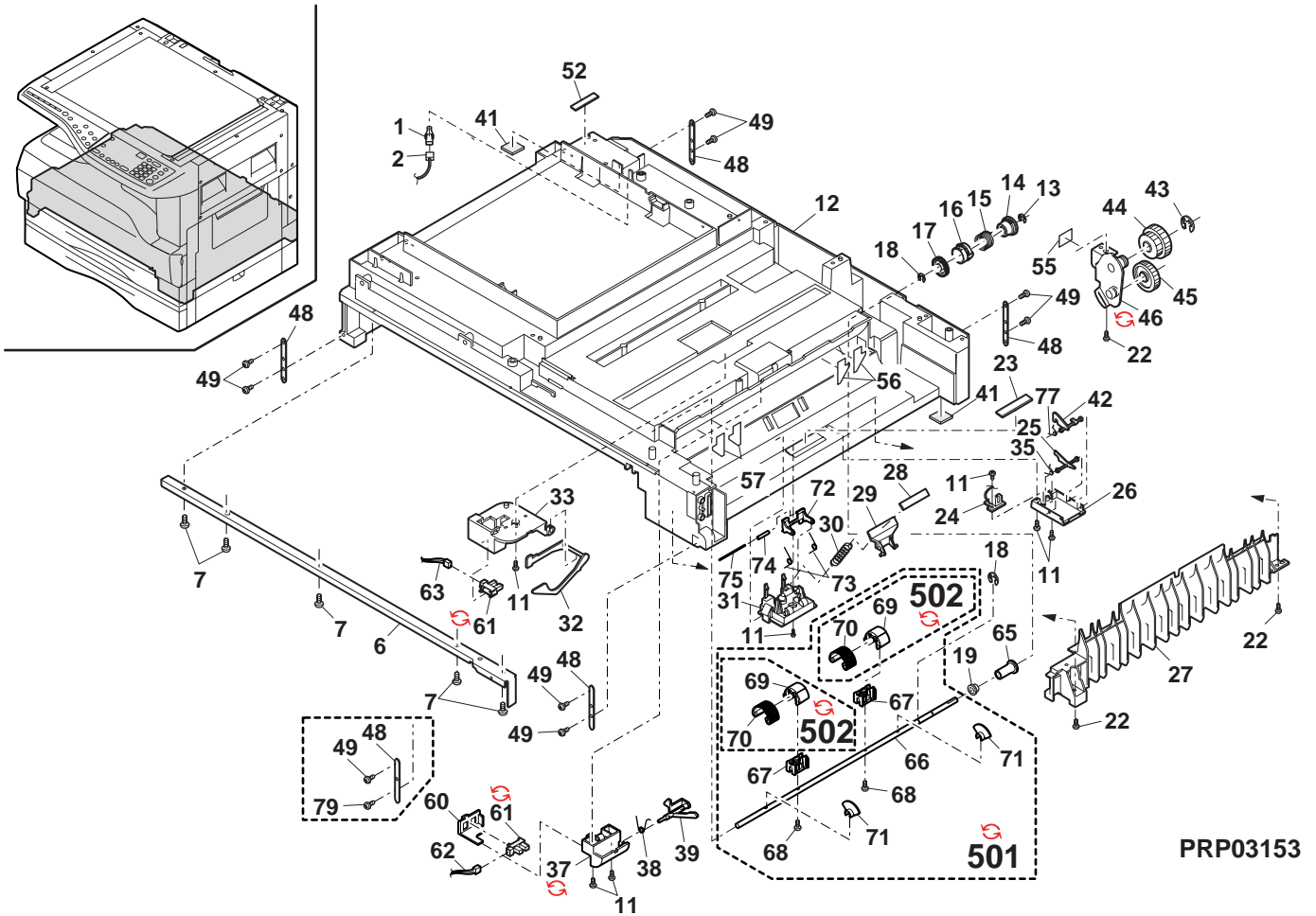


PRP03152

13 Base plate unit 1

NO.	PARTS CODE	Inter-change	PRICE RANK	NEW MARK	PART RANK	DESCRIPTION	TR No.	Effective time
1	QSW-B0017QSZZ		AF		B	Tray detect switch		
2	DHAI-0315QSZZ		AD		C	Tray SW harness		
6	LPLTM0065QSZZ		AL		C	Base reinforce plate F		
7	XEPS740P12000		AB		C	Screw(4x12)		
11	XEBS730P08000		AC		C	Screw(3x8)		
12	GDAI-0002QSE1		BF		D	Base plate		
13	XRESP40-06000		AA		C	E type ring(E4)		
14	LBOSZ1031FCZZ		AC		C	Clutch boss		
15	MSPRC0161QSZZ		AF		C	Clutch spring		
16	PPiPP0006QSZZ		AD		C	Clutch sleeve		
17	NGERH0060QSZZ		AH		C	Clutch gear(34T)		
18	XRESP50-06000		AA		C	E type ring(E5)		
19	NBRGP0007QSZZ		AD		C	Bearing(φ6)		
22	XEBS740P12000		AA		C	Screw(4x12)		
23	PSHEZ0133QSZZ		AD		C	Paper feeding sheet		
24	CPWBF0147QSE4		AL		E	Manual paper feeding sensor PWB		
25	MLEVP0023QSZZ		AE		C	MF sensor actuator		
26	PCOVP0033QSZ1		AF		C	Manual feed sensor cover		
27	LRALP0014QSEZ		AM		C	Base plate rail R		
28	PSHEZ0378QSZZ		AG		C	Sheet		
29	LPLTP0348QSZZ		AC		C	Pressure plate		
30	MSPRC0301QSZZ		AD		C	Pressure plate spring		
31	PFTA-0018QSZZ		AE		C	Pressure plate cover		
32	MLEVP0024QSZZ		AF		C	Sensor lever ACT		
33	LDAIS0029QSZZ		AD		C	Sensor base		
35	MSPRD0233QSZ1		AC		C	MF actuator spring		
37	LHLDZ0100QSZZ		AD		C	PS holder		
37	LHLDZ0100QSZ1	3	AD		C	PS holder [Form change]	DCE619	06/01 R/C
38	MSPRD0300QSZZ		AD		C	PS front actuator spring		
39	MLEVP0091QSZZ		AD		C	PS front actuator		
41	GLEGG0064FCZZ		AC		C	Rubber foot		
42	MLEVP0044QSZZ		AE		C	MF sensor actuator 2		
43	XRESP70-08000		AA		C	E type ring(E7) [AR-5320/AR-M160/AR-M205/AR-5220]		
44	NGERH0078QSZZ		AE		C	Joint gear(39/33T) [AR-5320/AR-M160/AR-M205/AR-5220]		
45	NGERH1169FCZZ		AF		C	2nd Joint gear [AR-5320/AR-M160/AR-M205/AR-5220]		
46	CPLTM0114QS01		AG		B	Joint gear fixing plate [AR-5320/AR-M160/AR-M205/AR-5220]		
46	CPLTM0114QS02	3	AG		B	Joint gear fixing plate [Unleaded correspondence] [AR-5320/AR-M160/AR-M205/AR-5220]		05/04
48	LPLTM0112QSZZ		AE		C	Adjustment plate [AR-5320/AR-M205]		
49	XEBSE40P14000		AA		C	Screw [AR-5320/AR-M205]		
52	LPLTM0125QSZZ		AD		C	Blind plate		
55	PSPAZ0024QSZZ		AB		C	2nd joint spacer [AR-5320/AR-M160/AR-M205/AR-5220]		
56	PSHEZ0187QSZZ		AB		C	PS guide sheet R [AR-M205]		
57	PSHEZ0186QSZZ		AB		C	PS guide sheet F [AR-M205]		
60	PCOVP0091QSZZ		AC		C	PS sensor cover		
61	VHPGP1S73P+-1		AF		B	Photo transistor		
61	VHPGP1S73P+-18	3	AF		B	Photo transistor [Unleaded solder correspondence]		06/03
62	DHAI-0318QSZZ		AE		C	Pin harness		
63	DHAI-0316QSZZ		AE		C	CAS EMP harness		
65	PCLR-0010QSZZ		AC		C	Collar		
66	NSFTZ0066QSPZ		AP		C	Roller shaft		
67	LHLDR0095QSZZ		AD		C	Paper feed roller holder		
68	XEBS730P12000		AC		C	Screw(3x12)		
69	LBRRC0011QSZZ		AD		C	Paper feed roller bracket		
70	PGUMM0013QSZZ		AG		C	Paper feed roller rubber [AR-1118/AR-5316(U.S.A,Canada,Australia, New Zealand,Europe,Philippines,Iran)]		
70	PGUMM0012QSZZ		AG		C	Paper feed roller rubber (Other Countries)		
71	PCLR-0011QSZZ		AC		C	Roller collar		
72	LBRC-0012QSZZ		AD		C	Collar bracket		
73	MSPRD0332QSZ1		AB		C	Collar spring		
74	NKOM-0009QSZZ		AC		C	Manual paper collar		
75	NSFTZ0064QSZZ		AD		C	Roller shaft		
77	MSPRD0148QSZZ		AB		C	Manual feed sensor spring		
79	XEBSE40P12000		AA		C	Screw(4x12) [AR-M160 only]		
501	CSFTZ0066RS73		AV		E	Paper feeding shaft unit [AR-1118/AR-5316(U.S.A,Canada,Australia, New Zealand,Europe,Philippines,Iran)]		
501	CSFTZ0066US73	1	AX		E	Paper feeding shaft unit [AR-1118/AR-5316(U.S.A,Canada,Australia, New Zealand,Europe,Philippines,Iran)]		07/06
501	CSFTZ0066RS71		AU		E	Paper feeding shaft unit (Other Countries)		
502	CGUMM0013RS51		AN		E	Paper feed roller rubber unit [AR-1118/AR-5316(U.S.A,Canada,Australia, New Zealand,Europe,Philippines,Iran)]		
502	CGUMM0013US51	1	AP		E	Paper feed roller rubber unit [AR-1118/AR-5316(U.S.A,Canada,Australia, New Zealand,Europe,Philippines,Iran)]		07/06
502	CGUMM0012RS51		AQ		E	Paper feed roller rubber unit (Other Countries)		

13 Base plate unit 1



14 Base plate unit 2

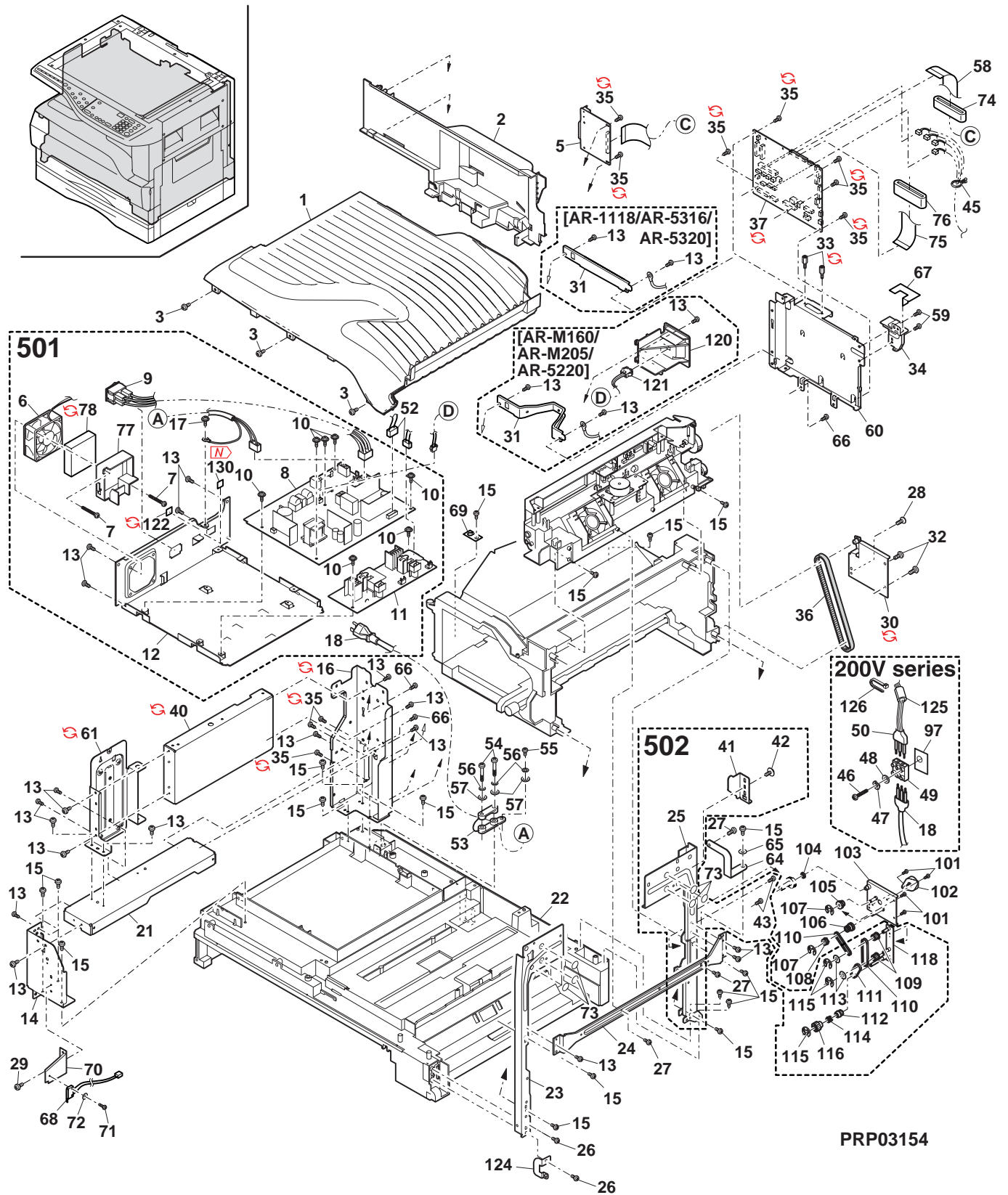
NO.	PARTS CODE	Inter-change	PRICE RANK	NEW MARK	PART RANK	DESCRIPTION	TR No.	Effective time
1	LSOU-0036QSZ1		BB		D	Delivery tray [AR-1118/AR-5316/AR-5320]		
	LSOU-0036QSZZ		BA		D	Delivery tray [AR-M160/AR-M205/AR-5220]		
2	GCAB-0069QSZZ		AT		D	Delivery rear cover		
3	XEBS740P10000		AA		C	Screw(4x10)		
5	CPWBF0114QSE6		BA		E	IF PWB [AR-M160/AR-M205/AR-5220]		
	CPWBF0114QSE3		BA		E	IF PWB [AR-1118/AR-5316/AR-5320]		
6	NFANP0010QSZZ		AS		B	PS fan		
7	XBPS730P32KS0		AC		C	Screw(3x32KS)		
8	RDENC0010QS12		BN		E	Low voltage power supply unit (100V series)		
	RDENC0010QS14		BN		E	Low voltage power supply unit (110V series)		
	RDENC0010QSZZ		BN		E	Low voltage power supply unit (120V series)		
	RDENC0010QS13		BN		E	Low voltage power supply unit (127V series)		
	RDENC0010QS11		BQ		E	Low voltage power supply unit (230V series)		
9	DUNTK0347RS11		AS		E	AC switch unit		
10	XBPS730P08KS0		AB		C	Screw(3x8KS)		
11	RDENC0017QSZZ		BE		E	High voltage power supply unit		
12	LPLTM0082QSZ7		AF		C	PS PWB fixing plate		
13	XHBS730P06000		AC		C	Screw(3x6)		
14	LFRM-0067QSZZ		AK		C	Corner frame FL		
15	XEBS740P12000		AA		C	Screw(4x12)		
	LFRM-0068QSZZ		AQ		C	Corner frame RL		
16	LFRM-0068QSZ2	5	AP		C	Corner frame RL [With No.40,No.61]		04/07 R/C
	LFRM-0068QSZ1	3	AQ		C	Corner frame RL [Productivity improvement]		04/11
17	XBPSN40P06K00		AA		C	Screw(4x6K)		
18	PHOG-1023CCZZ		AB		B	Plug protector (South Africa,India,SRH)		
	QPLGA0001QCZZ		AN		B	3pin plug (Special Country)(16A/250V)		
	QPLGA0002QCZZ		AN		B	Plug (Saudi Arabia)(125V)		
	QPLGA0003QCZZ		AN		B	Plug (SRS/SRSSC,Indonesia)(13A/250V)		
	QPLGA0009QCZZ		AS		B	Plug (SRH)(220V)		
	QPLGA4171CCZZ		AN		B	Plug (South Africa,India)		
	QACCR614QCPZ		AW		B	AC cord (100V)		
	QACCDR614QCPZ		AS		B	AC cord (120V)		
	QACCZR411QCPZ		AW		B	AC cord (Taiwan)		
	QACCER624QCPZ		AW		B	AC cord (Europe,Lebanon,Iran,Nigeria,West Africa,Algeria,Egypt, Jordan,Syria,Tunisia,Morocco,STCL)(230V)		
	QACCBR421QCPZ		AZ		B	AC cord (U.Kingdom,Saudi Arabia,Yemen,Oman, Qatar,Lebanon,Kuwait,UAE)(230V)		
	QACCLR421QCPZ		AW		B	AC cord (Australia,New Zealand)(230V)		
	QACCR7421QCZZ		AY		B	AC cord [AR-5220(LAG4)](10A/250V)		
DHAi-0167QSZZ		BA		B	AC cord (Saudi Arabia)(127V)			
21	LPLTM0308QSZZ		AL		C	Corner frame reinforce plate		
22	GDAi-0002QSE1		BF		D	Base plate		
23	LFRM-0025QSZ3		AH		C	Corner flame FR		
24	LPLTM0099QSZ2		AK		C	Corner frame R reinforce plate		
25	LFRM-0026QSZ2		AN		C	Corner frame RR		
26	XHBS730P14000		AA		C	Screw(3x14)		
27	XEBS730P10000		AC		C	Screw(3x10)		
28	LX-BZ0700FCPZ		AB		C	Screw(4x12) [AR-M160/AR-5220]		
29	XHBS730P08000		AB		C	Screw(3x8)		
30	CPLTM0071QS02		AL		C	Drive joint plate [AR-M160/AR-5220]		
	CPLTM0071QS03	3	AF		C	Drive joint plate [Unleaded correspondence][AR-M160/AR-5220]		05/04
31	LPLTM0311QSZZ		AD		C	Earth plate [AR-1118/AR-5316/AR-5320]		
	LPLTM0347QSZZ		AG		C	Net box fixing plate [AR-M160/AR-M205/AR-5220]		
32	XHBSD30P08000		AA		C	Screw(3x8) [AR-M160/AR-5220]		
33	LX-BZ0031QSPZ		AE		C	Screw		
34	LX-BZ0090QSPZ	1	AE		C	Screw		07/09
34	LANGT0014QSZZ		AF		C	MCU PWB fixing plate		
35	LX-BZ0750FCPZ		AA		C	Screw(3x6)		
35	LX-BZ0088QSPZ	1	AA		C	Screw(3x6)		07/09
36	NBLTT0007QSZZ		AH		B	Delivery roller drive belt		
37	CPWBX0128QS3K		CF	N	E	MCU PWB [AR-5316(U.S.A,Canada)]		
	CPWBX0128QS1K	1	CE	N	E	MCU PWB [AR-5316(U.S.A,Canada)]		06/06
	CPWBX0128QSAK	1	CE	N	E	MCU PWB [AR-5316(U.S.A,Canada)]		07/03 R/C
	CPWBX0128QS3N		CE	N	E	MCU PWB [AR-5316(Australia,New Zealand)]		
	CPWBX0128QS1N	1	CE	N	E	MCU PWB [AR-5316(Australia,New Zealand)]		06/06
	CPWBX0128QSAN	1	CE	N	E	MCU PWB [AR-5316(Australia,New Zealand)]		07/03 R/C
	CPWBX0128QS37		BZ		E	MCU PWB [AR-5316(Other Countries)]		
	CPWBX0128QS17	1	CE	N	E	MCU PWB [AR-5316(Other Countries)]		06/06
	CPWBX0128QSA7	1	CE	N	E	MCU PWB [AR-5316(Other Countries)]		07/03 R/C
	CPWBX0128QS3H		BZ	N	E	MCU PWB [AR-1118]		
	CPWBX0128QS38		BZ		E	MCU PWB [AR-5320]		
	CPWBX0128QS18	1	CE	N	E	MCU PWB [AR-5320]		06/06
	CPWBX0128QSA8	1	CE	N	E	MCU PWB [AR-5320]		07/03 R/C
	CPWBX0128QS31		CA		E	MCU PWB [AR-M160]		
	CPWBX0128QS11	1	CE	N	E	MCU PWB [AR-M160]		06/06
	CPWBX0128QSA1	1	CE	N	E	MCU PWB [AR-M160]		07/03 R/C
	CPWBX0128QS32		CA		E	MCU PWB [AR-M205]		
	CPWBX0128QS12	1	CE	N	E	MCU PWB [AR-M205]		06/06
	CPWBX0128QSA2	1	CE	N	E	MCU PWB [AR-M205]		07/03 R/C
	CPWBX0128QS33		CA		E	MCU PWB [AR-5220]		

14 Base plate unit 2

NO.	PARTS CODE	Inter-change	PRICE RANK	NEW MARK	PART RANK	DESCRIPTION	TR No.	Effective time
37	CPWBX0128QS13	1	CE	N	E	MCU PWB [AR-5220]		06/06
	CPWBX0128QSA3	1	CE	N	E	MCU PWB [AR-5220]		07/03 R/C
40	LPLTM0307QSZZ		AL		C	Delivery left cover		
	LPLTM0307QSZZ	5	AL		C	Delivery left cover [With No.16, No.61]		04/07 R/C
41	LPLTM0309QSZZ		AE		C	Optical adjustment plate		
42	LX-BZ0039QSPZ		AB		C	Screw(4x10)		
43	XHBS730P08000		AB		C	Screw(3x8) [AR-M205]		
45	LHLDW0086QSZZ		AB		C	Harness ring		
46	XEBS730P18000		AB		C	Screw(3x18) (200V series)		
47	XWSS730-07000		AA		C	Washer (200V series)		
48	XWHS730-05080		AA		C	Washer (200V series)		
49	QTANN0015FCZZ		AG		C	3P terminal base (200V series)		
50	DHAI-0140QSZ1		AH		C	AC harness (200V series)		
52	DHAI-0320QSZZ		AN		C	PS harness		
53	LFIX-0016FCZZ		AD		C	AC cord holder		
54	XEPS740P30000		AC		C	Screw(4x30)		
55	XEBS740P12000		AA		C	Screw(4x12)		
56	XWSS740-10000		AA		C	Washer		
57	XWHS740-08100		AA		C	Washer		
58	DHAI-0328QSZZ		AH		C	GDI-MCU harness		
59	XEBS730P06000		AA		C	Screw(3x6)		
60	LPLTM0310QSZZ		AP		C	MCU fixing plate		
61	LPLTM0306QSZZ		AL		C	Optical reinforce plate		
	LPLTM0306QSZZ	5	AL		C	Optical reinforce plate [With No.40, No.16]		04/07 R/C
64	PSHEZ0135QSZZ		AC		C	Driving plate sheet		
65	XWHS740-08100		AA		C	Washer		
66	XEBS730P08000		AC		C	Screw(3x8)		
67	PSHEZ0421QSZZ		AC		C	MCU edge protect sheet		
68	CSW-M0007RS55		AS		B	Interlock switch unit		
69	PSHEZ0408QSZZ		AC		C	Interlock switch maintenance sheet		
70	LPLTM0303QSZZ		AE		C	Interlock switch fixing plate		
71	XBPS720P09000		AB		C	Screw(2x9)		
72	XWHS720-04043		AA		C	Washer		
73	PSHEZ0448QSZZ		AA		C	Optical base plate bottom sheet A		
74	RCORF0026QSZZ		AE		C	IF FFC core		
75	DHAI-0342QSZZ		AG		C	CCD harness		
76	RCORF0018QSZZ		AR		C	Ferrite core		
77	PDUC-0006QSZZ		AF		C	Duct		
78	PFILZ0013QSZZ		AR		A	Ozone filter		
	PFILZ0013QSZZ	1	AR	N	A	Ozone filter		07/04 R/C
97	PSHEZ0140QSZZ		AE		C	3P terminal base sheet (200V series)		
101	XHBSD30P08000		AA		C	Screw(3x8)		
102	RMOTS0050QSZZ		AT		B	DUP motor [AR-M205]		
103	CPLTM0073QS01		AM		B	DUP motor fixing plate [AR-M205]		
104	NBRGC0529FCZZ		AD		C	Bearing [AR-M205]		
105	NGERH0065QSZZ		AC		C	Gear(21-28T) [AR-M205]		
106	NGERH0064QSZZ		AD		C	Gear pulley(40T24T) [AR-M205]		
107	XRESP40-06000		AA		C	E type ring(E4) [AR-M205]		
108	NGERH0075QSZZ		AC		C	Gear(20T) [AR-M205]		
109	NPLYZ0011QSZZ		AC		C	Pulley [AR-M205]		
110	NBLTT0009QSZZ		AG		B	DUP driving belt(134) [AR-M205]		
111	NBLTT0008QSZZ		AG		B	DUP roller driving belt [AR-M205]		
112	NPLYZ0008QSZZ		AC		C	Pulley(S2M20T) [AR-M205]		
113	PSHEZ0065QSZZ		AB		C	Pulley flange sheet [AR-M205]		
114	MSPRC1315FCZ1		AD		C	Clutch spring A [AR-M205]		
115	XRESP40-06000		AA		C	E type ring(E4) [AR-M205]		
116	NGERH0066QSZZ		AD		C	Gear(17T) [AR-M205]		
118	CPLTM0103QS02		AF		B	DUP driving idle plate [AR-M205]		
120	LHLDZ0110QSZZ		AG		C	Connector holder [AR-M160/AR-M205/AR-5220]		
121	DHAI-0403QSZZ		AG		C	NWAC I/F 1 harness [AR-M160/AR-M205/AR-5220]		
122	TLABZ4868FCZZ		AC		D	Earth label (200V series)		
	TLABZ4868FCZZ	1	AB	N	D	Earth label (200V series)		06/12
124	LPLTM0360QSZZ		AC		C	Earth plate		
125	RCORF0004QSZZ		AF		C	Core (200V series)		
501	LBJNDJ0037FCZ1		AA		C	Band (200V series)		
	CDENC0010RS59		BV		E	Power supply unit(Without No.13,17,18,122) (110V series)		
	CDENC0010RS63		BW		E	Power supply unit(Without No.13,17,18,122) (120V series)		
	CDENC0010RS66		BU		E	Power supply unit(Without No.13,17,18,122) (127V series)		
	CDENC0010RS52		BX		E	Power supply unit(Without No.13,17,18,122) (230V series)		
	CDENC0010RS64		BX		E	Power supply unit(Without No.13,17,18,122) (230V series)		
502	DUNT-0341RSZZ		AV		E	Corner frame RR unit [AR-5316/AR-5320/AR-M160/AR-5220]		
	DUNT-0341RS11		AU		E	Corner frame RR unit [AR-1118]		
	DUNT-0342RSZZ		AZ		E	Corner frame RR unit [AR-M205]		

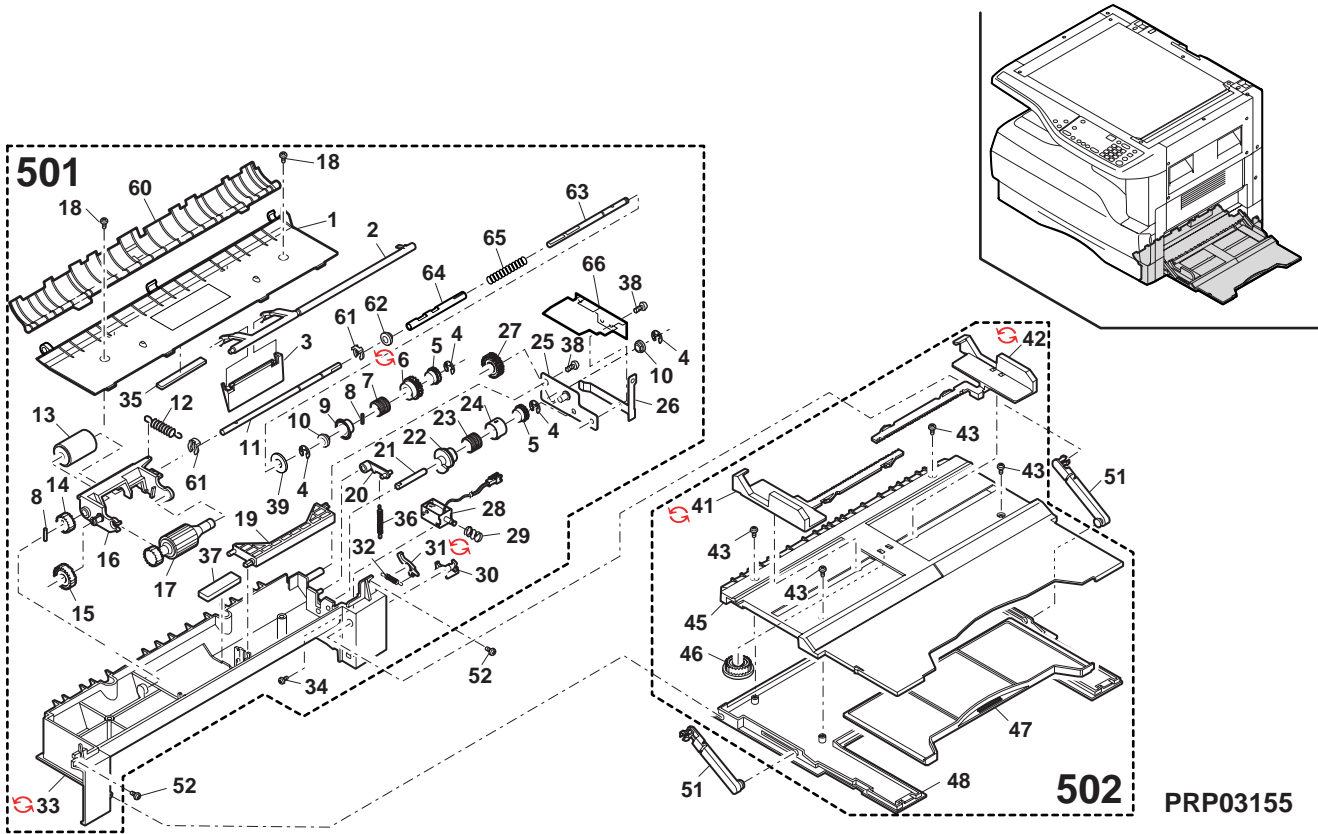
△
△
△
△
△

14 Base plate unit 2



PRP03154

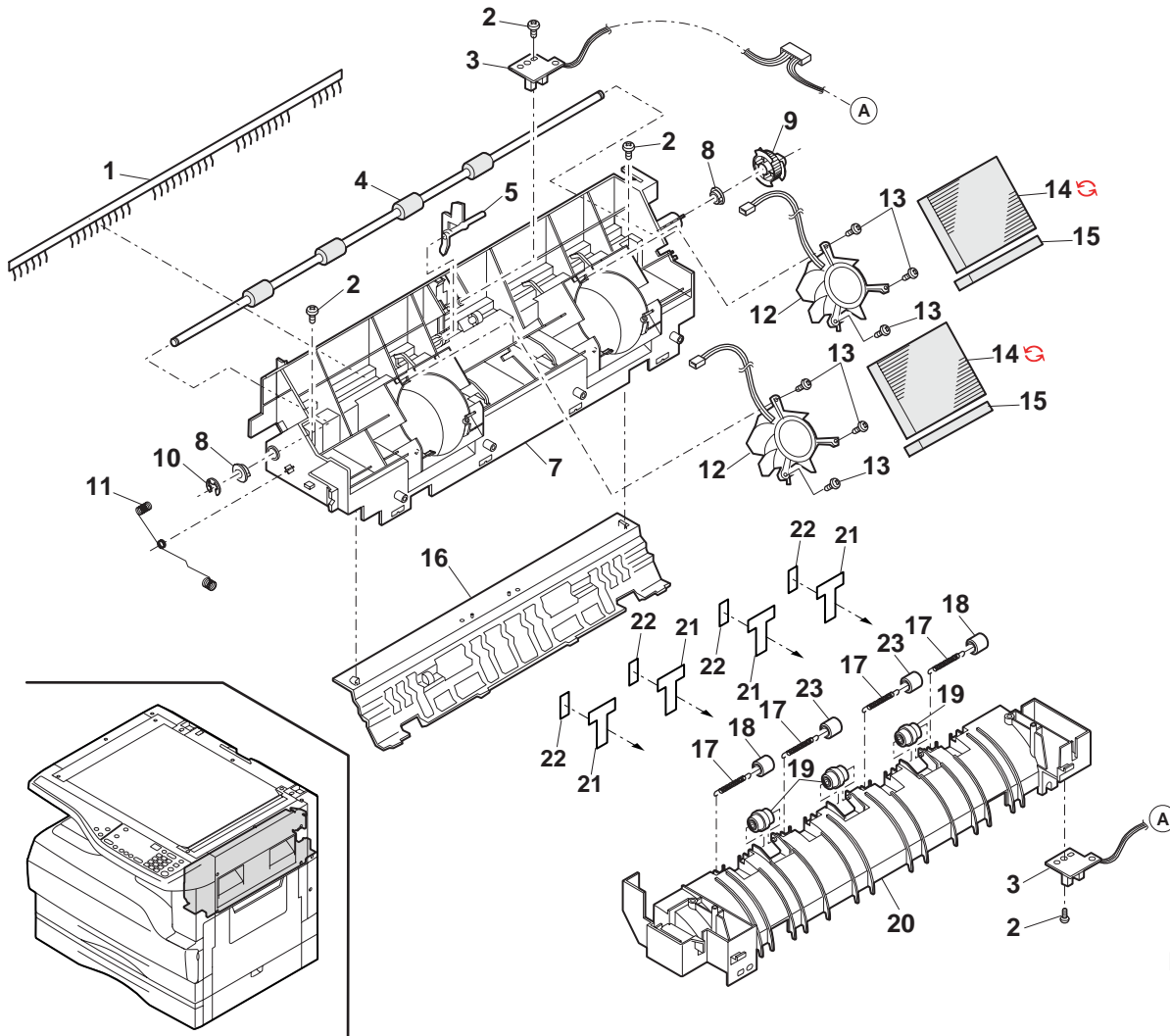
15 Manual paper feeding multi unit



16 Delivery frame unit (AR-1118/AR-5316/AR-5320)

NO.	PARTS CODE	Inter-change	PRICE RANK	NEW MARK	PART RANK	DESCRIPTION	TR No.	Effective time
1	PBRSS0026QSZZ		AF		B	Discharge brush		
2	XEBS730P08000		AC		C	Screw(3x8)		
3	CPWBF0147QSE9		AP		E	Duplex/P-out sensor PWB		
4	NR0LM0109QSPZ		AT	N	B	Delivery roller S		
5	MLVVP0025QSZZ		AD		C	Delivery actuator		
7	LFRM-0065QSEZ		AK		C	Delivery upper frame		
8	NBRGM0501FCZZ		AB		C	Bearing		
9	NPLYZ0029QSZZ		AD		C	Delivery drive gear(34T)		
10	XRESP50-06000		AA		C	E type ring(E5)		
11	MSPRD0297QSZ1		AG		C	Delivery earth spring A		
12	NFANP0014QSZZ		AT		B	Cooling fan		
13	XEBS720P06000		AC		C	Screw(2x6)		
14	PfiLZ0004QSZZ		AM		A	Ozone filter		
14	PfiLZ0004QSZ1	1	AM	N	A	Ozone filter		07/04 R/C
15	PMLT-0099QSZZ		AC		C	Cooling fan cushion		
16	PGiDM0062QSZ3		AK	N	C	Delivery upper paper guide 20		
17	MSPRT0229GCAZ		AC		C	FU spring R		
18	NR0LP0034QSZZ		AD		C	Delivery roller		
19	NKOM-0002QSZZ		AC		C	Delivery collar		
20	LFRM-0066QSZZ		AT		C	Delivery lower frame		
21	PSHEZ0446QSZZ		AB		C	Delivery sheet		
22	PSHEZ0449QSZZ		AB		C	Rubber sheet		
23	NR0LP0104QSZZ		AC		C	Delivery roller		
	(Unit)							
901	CFRM-0065RS53		BL		E	Delivery frame unit		[AR-5316/AR-5320]

16 Delivery frame unit (AR-1118/AR-5316/AR-5320)

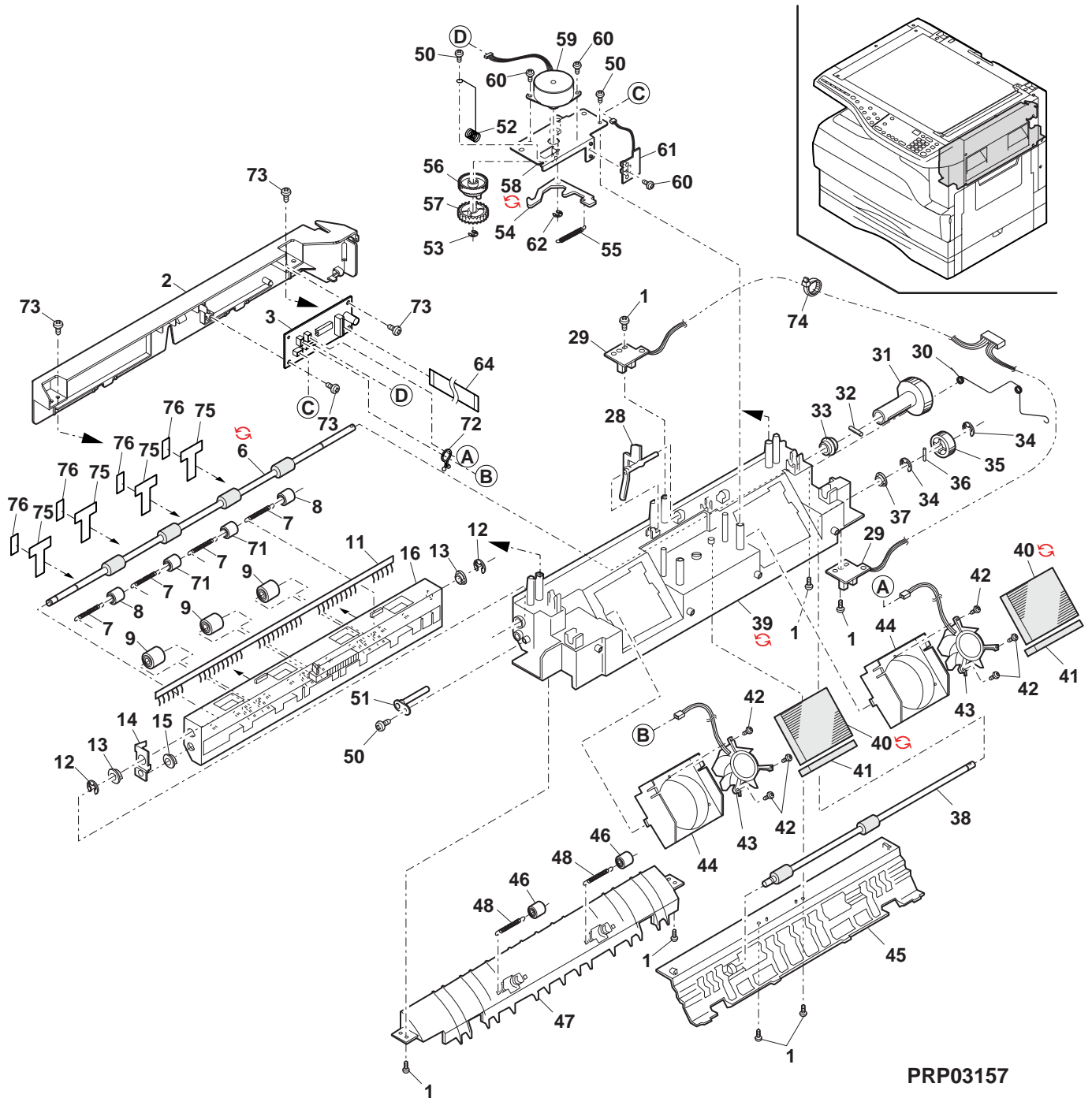


FCP03156

17 Delivery frame unit (AR-M160/AR-M205/AR-5220)

NO.	PARTS CODE	Inter-change	PRICE RANK	NEW MARK	PART RANK	DESCRIPTION	TR No.	Effective time
1	XEBSD30P08000		AA		C	Screw(3x8)		
2	GCOV-0049QSZ2		AK		C	Delivery front side cover		
3	CPWBF0129QSE1		AQ		E	Delivery interface PWB		
6	NROLM0103QSZZ		AQ		C	Delivery roller C		
6	NROLM0124QSZ1	3	AP		C	Delivery roller C [Unleaded correspondence]		05/04
7	MSPRT0229GCAZ		AC		C	FU spring R		
8	NROLP0034QSZZ		AD		C	Delivery roller		
9	NKOM-0002QSZZ		AC		C	Delivery collar		
11	PBRSR0009QSZ1		AH		B	Discharge brush [AR-M160/AR-5220]		
11	PBRSR0005QSZZ		AK		B	Discharge brush [AR-M205]		
12	XRESP50-06000		AA		C	E type ring(E5)		
13	NBRGC0529FCZZ		AD		C	Bearing		
14	LPLTM0100QSZ1		AD		C	Delivery earth plate B		
15	NBRGY2122SCZZ		AB		B	Transport roller bearing 1		
16	LHLDZ0040QSZZ		AS		C	Delivery roller holder		
28	MLEVP0025QSZZ		AD		C	Delivery actuator		
29	CPWBF0147QSE2		AP		E	Duplex/P-out sensor PWB		
30	MSPRD0143QSZ1		AF		C	Delivery earth spring A		
31	NPLYZ0030QSZ1		AE		C	Delivery pulley [AR-M160/AR-5220]		
31	NGERH0063QSZZ		AD		C	Delivery drive gear(30T) [AR-M205]		
32	LPIINS0258FCZZ		AA		C	Spring pin(φ3-8)		
33	NBRGC0019QSZZ		AD		C	Bearing(φ6)		
34	XRESP40-06000		AA		C	E type ring(E4) [AR-M205]		
35	NGERH0070QSZZ		AC		C	DUP delivery R gear(20T) [AR-M205]		
36	XPSSJ20-10000		AA		C	Spring pin(φ2-10) [AR-M205]		
37	NBRGY2122SCZZ		AB		B	Transport roller bearing 1 [AR-M205]		
38	NROLP0038QSZZ		AP		C	DUP delivery roller [AR-M205]		
39	LFRM-0027QSZ1		AV		C	Delivery frame		
39	LFRM-0027QSZ3	1	AV		C	Delivery frame		06/04
40	PFILZ0004QSZZ		AM		A	Ozone filter [AR-M205/AR-5220]		
40	PFILZ0004QSZ1	1	AM	N	A	Ozone filter [AR-M205/AR-5220]		07/04 R/C
41	PMLT-0099QSZZ		AC		C	Cooling fan cushion		
42	XEBSD20P06000		AA		C	Screw(2x6)		
43	NFANP0009QSZZ		AT		B	Cooling fan		
44	PDUC-0003QSZ1		AG		C	Cooling fan duct		
45	PGIDM0062QSZ3		AK	N	C	Delivery upper paper guide 20		
46	NROLP1122FCZZ		AF		C	PS upper roller [AR-M205]		
47	PGIDM0040QSZZ		AK		C	Delivery lower paper guide [AR-M205/AR-5220]		
48	MSPRT0229GCAZ		AC		C	FU spring R [AR-M205]		
50	XEBSD30P08000		AA		C	Screw(3x8)		
51	CSFTZ0023QS02		AH		C	Shifter shaft		
52	MSPRD0144QSZZ		AC		C	Delivery earth spring B		
53	XRESP40-06000		AA		C	E type ring(E4)		
54	LSTPP0003QSZ1		AC		C	Shifter stopper		
55	MSPRT0107QSZZ		AC		C	Shifter return spring		
56	NGERH0067QSZZ		AD		C	Shifter gear(24T)		
57	NGERH0068QSZ1		AD		C	Shifter gear(50T)		
58	CPLTM0075QS01		AL		C	Shifter drive plate		
58	CPLTM0075QS02	3	AG		C	Shifter drive plate [Unleaded correspondence]		05/04
59	RMOTS0040QSZZ		AR		B	Shifter motor		
60	XHBSF30P05000		AA		C	Screw(3x5)		
61	CPWBF0147QSE3		AL		E	Shifter HP sensor PWB		
62	XRESP30-06000		AA		C	E type ring(E3)		
64	DHAi-0325QSZZ		AD		C	Delivery tray unit harness		
71	NROLP0104QSZZ		AC		C	Delivery roller		
72	LHLDW0086QSZZ		AB		C	Harness ring		
73	XHBSD30P08000		AA		C	Screw(3x8)		
74	LBNDJ0013FCZ1		AE		C	Cable band		
75	PSHEZ0446QSZZ		AB		C	Delivery sheet		
76	PSHEZ0449QSZZ		AB		C	Rubber sheet		
	(Unit)							
901	CFRM-0027RS72		BP		E	Delivery frame unit SIMP [AR-M160/AR-5220]		
	CFRM-0027RS73		BQ		E	Delivery frame unit DUP [AR-M205]		

17 Delivery frame unit (AR-M160/AR-M205/AR-5220)

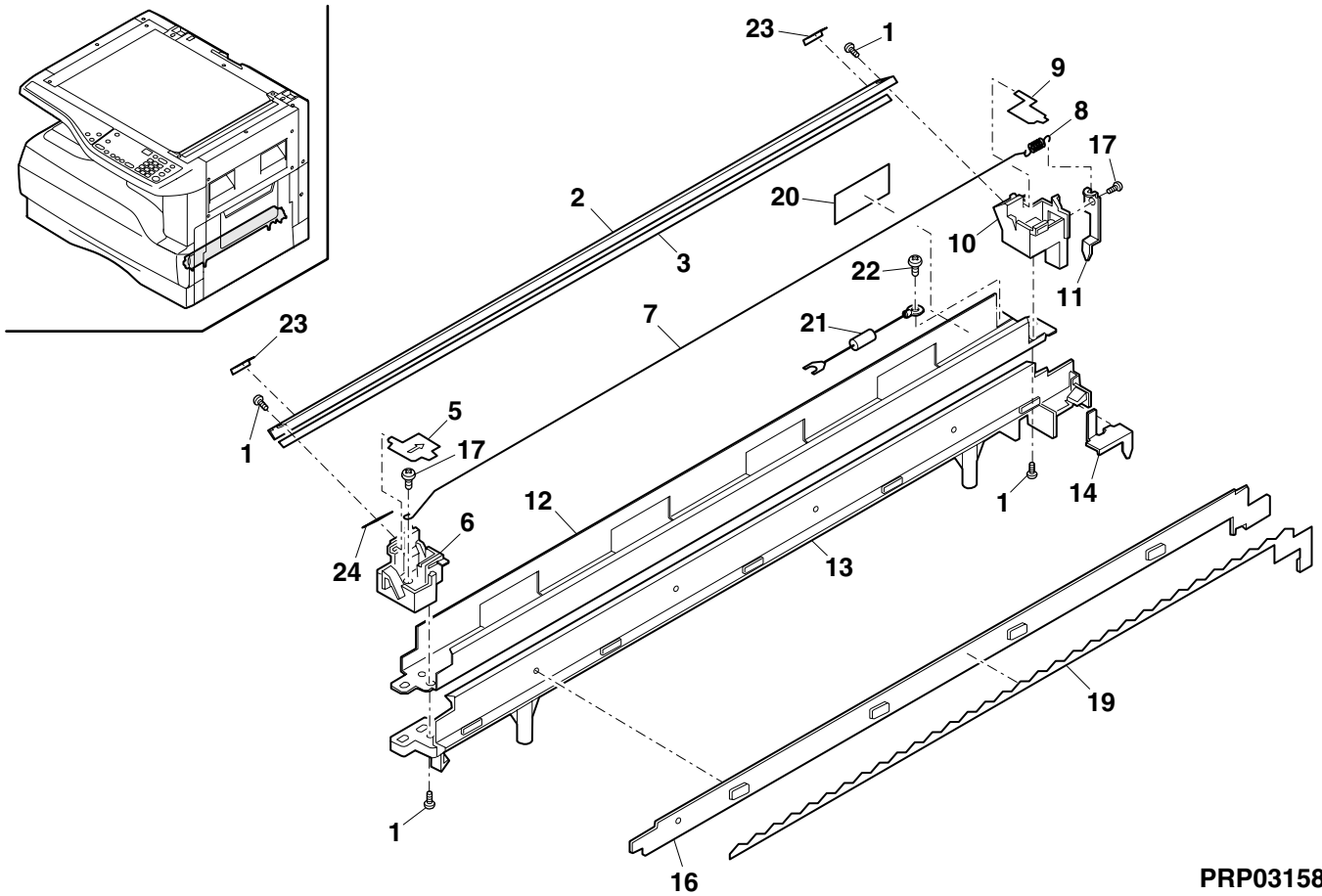


PRP03157

18 TC case unit

NO.	PARTS CODE	Inter-change	PRICE RANK	NEW MARK	PART RANK	DESCRIPTION	TR No.	Effective time
1	XEBS730P08000		AC		C	Screw(3x8)		
2	PGiDH0118QSZZ		AK		C	TC front guide		
3	PSHEP0050QSZ1		AD		C	TC sheet		
5	PSHEP0051QSZZ		AB		C	TC cover sheet F		
6	LHLDZ0030QSZZ		AD		C	TC holder F		
7	DWiR-0466CSZZ		BE		B	Charger wire		
8	MSPRT0513FCZ1		AA		C	MC tension spring		
9	PSHEP0052QSZZ		AB		C	TC cover sheet R		
10	LHLDZ0032QSZZ		AD		C	TC holder R		
11	QSLP-0009QSZZ		AD		C	TC electrode plate		
12	PCASZ0013QSZZ		AP		C	TC case		
13	LHLDZ0031QSZZ		AH		C	Discharge holder		
14	QSLP-0008QSZZ		AD		C	BC electrode plate		
16	PGiDM0032QSZZ		AE		C	Separator guide		
17	XEBS730P06000		AA		C	Screw(3x6)		
19	PSHEZ0125QSZZ		AE		C	Discharger delivery sheet		
20	PSHEZ0434QSZZ		AC		C	TC case sheet		
21	DUNTK0233QSPZ		AH		E	Resistor unit transfer		
22	XBPSC30P06K00		AA		C	Screw(3x6K)		
23	PSHEZ0435QSZ1		AA		C	Guide sheet		
24	PSPAZ0040QSZZ		AB		C	Front guide spacer		
(Unit)								
901	CHLDZ0030RS54		BA		E	TC case unit	[Except AR-1118]	
	CHLDZ0030RS55		AY		E	TC case unit	[AR-1118]	

18 TC case unit

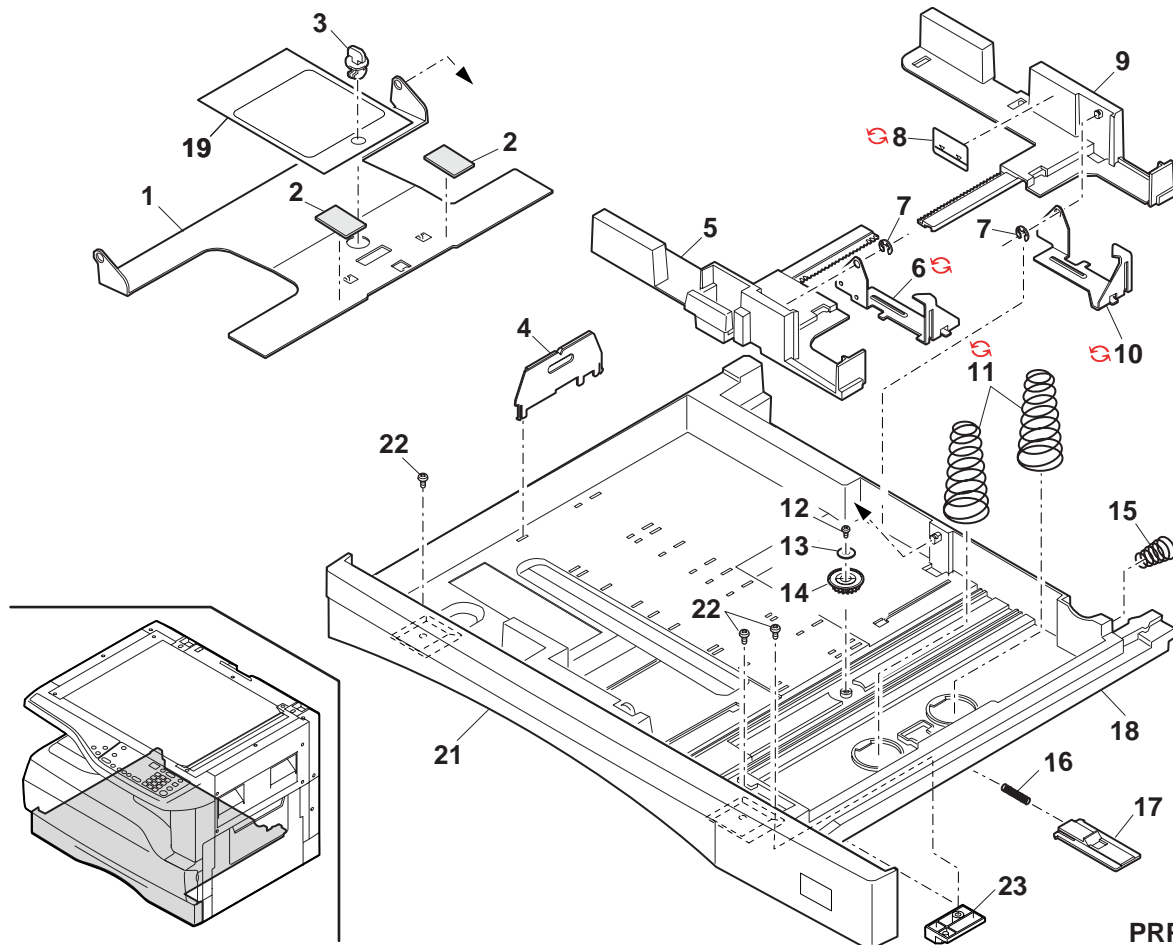


PRP03158

19 250 sheets tray unit

NO.	PARTS CODE	Inter-change	PRICE RANK	NEW MARK	PART RANK	DESCRIPTION	TR No.	Effective time
1	LPLTM0364QSZZ		AR		C	Rotation plate		
2	PSHEZ0441QSZZ		AD		C	Rotation plate sheet		
3	LHLDW1226FCZZ		AB		C	Turn fastener		
4	LPLTM2642FCG2		AD		C	Tray rear plate		
5	PGIDM0122QSZZ		AL		C	Guide F		
6	PTME-0027QSZ2		AL		C	250 tray pawl F		
6	PTME-0027QSZ3	3	AM		C	250 tray pawl F (For Taiwan)	DCE650R	07/03
7	XRESP40-06000		AA		C	E type ring(E4)		
8	TLABH0064QSZ1		AC		D	Indicator label		
8	TLABH0064QSZ2	1	AC		D	Indicator label	DCE645	07/03
9	PGIDM0123QSZZ		AL		C	Guide R		
10	PTME-0028QSZ2		AL		C	250 tray pawl R		
10	PTME-0028QSZ3	3	AM		C	250 tray pawl R (For Taiwan)	DCE650R	07/03
11	MSPRC0334QSZZ		AD		C	Tray spring		
11	MSPRC0090QSZZ	3	AD		C	Tray spring (For Taiwan)	DCE650R	07/03
12	XEBS730P08000		AC		C	Screw(3x8)		
13	XWHS730-08100		AA		C	Washer		
14	NGERH0193FCZZ		AB		C	UC manual feed gear		
15	MSPRC0152QSZZ		AB		C	Tray drawer lower spring D		
16	MSPRC1145FCZZ		AA		C	Stopper spring		
17	LSTPP0161FCZZ		AB		C	Rotation plate stopper		
18	GCASP0007QSZ1		AY		D	Tray case		
19	TTAG-0009QSZZ		AC		D	Tray rotation tag		
21	JHNDP0007QSZZ		AS		D	Handle		
22	XEBS740P10000		AA		C	Screw(4x10)		
23	LPLTP0368QSZZ		AD		C	Cassette position block		
	(Unit)							
901	CCASP0007RS52		BL		E	250 sheets tray unit		

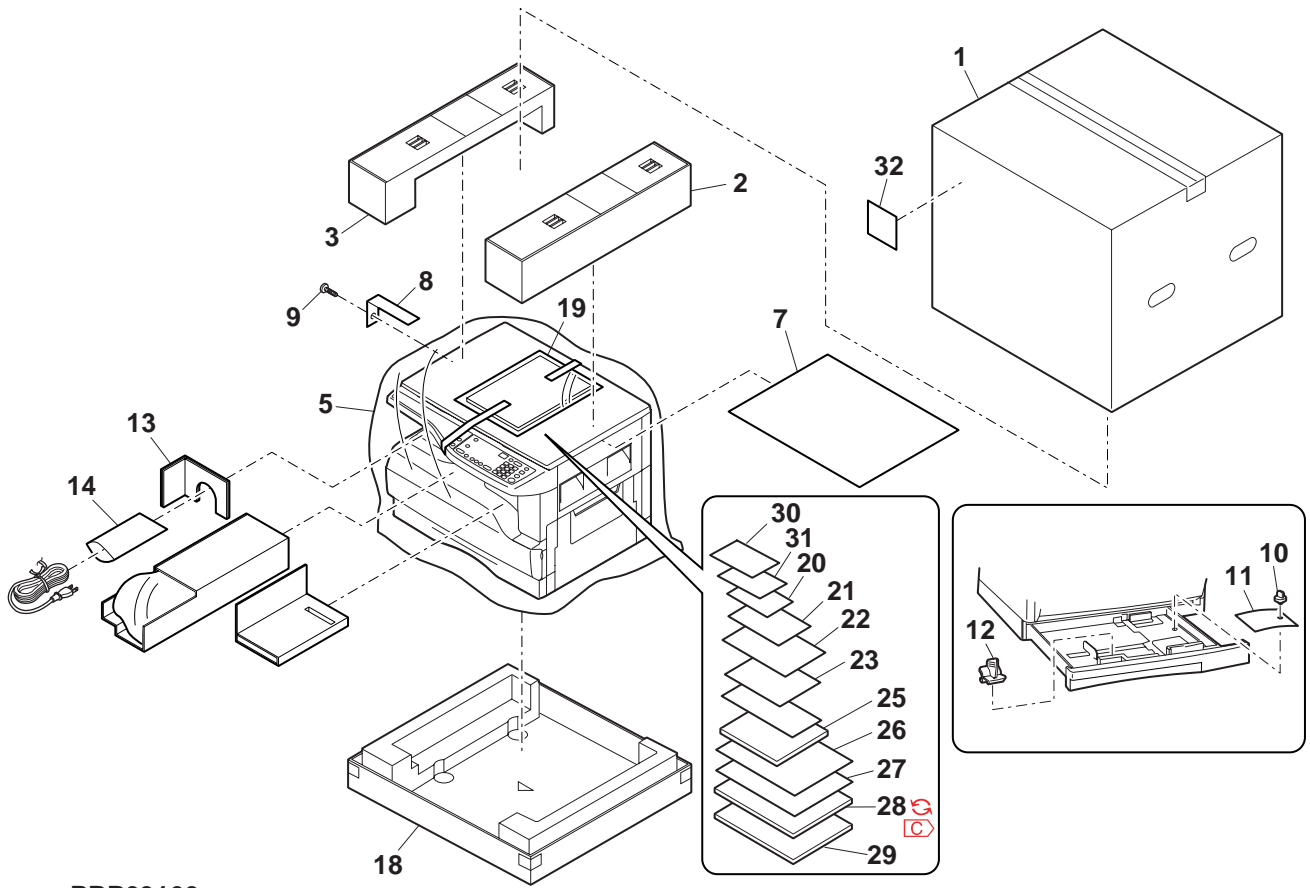
19 250 sheets tray unit



20 Packing material & Accessories

NO.	PARTS CODE	Inter-change	PRICE RANK	NEW MARK	PART RANK	DESCRIPTION	TR No.	Effective time
1	SPAKC0462QS24		BB	N	D	Packing case [AR-1118]		
2	SPAKA0464QSZZ		AV		D	Top packing cushion R		
3	SPAKA0463QSZZ		AV		D	Top packing cushion L		
5	SSAKZ0003QSZZ		AF		D	Vinyl bag		
7	SPAKA0134QSZZ		AE		D	OC protect sheet		
8	TCADZ0010QSZZ		AC		D	Fixing screw caution card		
9	LX-BZ0015QSPZ		AF		C	2nd,3rd mirror fixing screw		
10	LHLDW1226FCZZ		AB		C	Turn fastener		
11	TTAG-0009QSZZ		AC		D	Tray rotation tag		
12	CCLZ0005RS51		AQ		D	Charger cleaner unit [Except AR-1118]		
	CCLZ0005QS51		AQ		D	Charger cleaner unit [AR-1118]		
13	SPAKA0466QSZZ		AG		D	Scanner reinforcement material		
14	SSAKA3001CCZZ		AA		D	Vinyl bag(140x260mm)		
18	SPAKA0465QSZZ		BE		D	Bottom case		
19	SSAKA2343QCZZ		AA		D	Vinyl bag(260x380mm)		
20	TLABH0460QSZZ		AD		D	Scanning transmitting label [Except AR-1118/AR-5316(U.S.A,Canada,Australia,New Zealand)]		
21	TLABH0078QSZ1		AE		D	Magnification select label (Inch series)		
	TLABH0068QSZ1		AF		D	Magnification select label (AB series)		
	TLABH0069QSZ2		AG		D	Size display label (Inch series)		
22	TLABH0065QSZ2		AG		D	Size display label (AB series Other Countries)		
	TLABH0117QSZ1		AP		D	Size display label (Taiwan only)		
23	CCASZ0067FC01		AD		D	Maintenance card [Except AR-5316(U.S.A,Canada)]		
	CDSKA0108QS32		BB	N	D	CD-ROM [AR-5316(U.S.A,Canada)]		
	CDSKA0059QS33		AM		D	CD-ROM [AR-1118]		
	CDSKA0049QS34		AM		D	CD-ROM (U.S.A,Europe,U.Kingdom)		
25	CDSKA0052QS33		BB		D	CD-ROM (Germany)		
	CDSKA0054QS33		BB		D	CD-ROM (Taiwan)		
	CDSKA0032QS33		BB		D	CD-ROM [AR-M205(Iran only)]		
	CDSKA0057QS33		BB		D	CD-ROM (Other Countries)		
26	TCADZ0098QSZZ		AF		D	Instral manual card (U.kingdom only)		
27	TCADZ0049QSZZ		AH		D	Instral card (Europe)		
	TCADZ2001QCZA		AE		D	Instral card (Australia,New Zealand)		
	TiNSE1480QSZ1		BB	N	D	Operation manual(COPY) [AR-5316(U.S.A,Canada)]		
	TiNSE1152QSZZ		AU		D	Operation manual(COPY) [AR-5316(Australia,New Zealand)]		
	TiNSE1152QSZ1	1	AU		D	Operation manual(COPY) [AR-5316(Australia,New Zealand)]		06/06
	TiNSE1152QSZ2	1	AU		D	Operation manual(COPY) [AR-5316(Australia,New Zealand)]		07/07
	TiNSA1471QSZZ		BB		D	Operation manual(COPY) [AR-1118(ARABIC)]		
	TiNSE1470QSZ1		BC		D	Operation manual(COPY) [AR-1118(ENGLISH)]		
	TiNSE1152QSZ1		AU		D	Operation manual(COPY) (ENGLISH)		
	TiNSE1156QSZ1		AU		D	Operation manual(COPY) (ENGLISH)(Hong kong only)		
	TiNSF1159QSZ1		AU		D	Operation manual(COPY) (FRENCH)		
	TiNSF1159QSZ2	1	AU		D	Operation manual(COPY) (FRENCH)		07/07
	TiNSE0908QSZ1		AR		D	Operation manual(COPY) (ENGLISH)(U.S.A only)		
	TiNSF0912QSZ2		AZ		D	Operation manual(COPY) (FRENCH)(Canada,Algeria,Egypt,Syria, Tunisia,Nigeria,West Africa,Morocco,Jordan,Lebanon)		
28	TiNSF0912QSZ3	1	AZ		D	Operation manual(COPY) (FRENCH)(Canada,Algeria,Egypt,Syria, Tunisia,Nigeria,West Africa,M		07/07
	TiNSG0913QSZ1		AZ		D	Operation manual(COPY) (GERMAN)(Germany,Greece,Cyprus, Turkey,Poland,Hungary,Czecho,Russia)		
	TiNSG0913QSZ2	1	AZ		D	Operation manual(COPY) (GERMAN)(Germany,Greece,Cyprus, Turkey,Poland,Hungary,Czecho,Russ		06/07
	TiNSG0913QSZ3	1	AZ		D	Operation manual(COPY) (GERMAN)(Germany,Greece,Cyprus, Turkey,Poland,Hungary,Czecho,Russ		07/07
	TiNSE0911QSZ1		AW		D	Operation manual(COPY) (ENGLISH)(U.kingdom only)		
	TiNSE0911QSZ2	1	AW		D	Operation manual(COPY) (ENGLISH)(U.kingdom only)		06/07
	TiNSE0911QSZ3	1	AW		D	Operation manual(COPY) (ENGLISH)(U.kingdom only)		07/07
	TiNSE0910QSZ2		AX		D	Operation manual(COPY) (ENGLISH)(Hong kong only)		
	TiNSS0931QSZ2		AZ		D	Operation manual(COPY) (SPANISH)(LAG2,LAG4)		
	TiNSE0909QSZ2		AW		D	Operation manual(COPY) (ENGLISH)(Other Countries)		
	TiNSZ1533QSZZ		AU		D	Operation manual(COPY) (PERSIA)(Iran)		
	TiNSE1481QSZZ		AS	N	D	Operation manual(SETUP) [AR-5316(U.S.A,Canada)]		
	TiNSE1473QSZZ		AU		D	Operation manual(SETUP) [AR-1118(ARABIC)]		
	TiNSE1209QSZZ		AK		D	Operation manual(SETUP) (ENGLISH)		
	TiNSF1211QSZZ		AN		D	Operation manual(SETUP) (FRENCH)		
29	TiNSF0934QSZZ		AN		D	Operation manual(SETUP) (FRENCH)(Canada,Algeria,Egypt,Syria, Tunisia,Nigeria,West Africa,Morocco,Jordan,Lebanon)		
	TiNSG0935QSZZ		AN		D	Operation manual(SETUP) (GERMAN)(Germany,Greece,Cyprus, Turkey,Poland,Hungary,Czecho,Russia)		
	TiNSS0952QSZZ		AN		D	Operation manual(SETUP) (SPANISH)(LAG2,LAG4)		
	TiNSE0933QSZZ		AH		D	Operation manual(SETUP) (ENGLISH)(Other Countries)		
30	TiNSX1475QSZZ		AG		D	Supplementary manual [AR-1118]		
31	TiNSE1476QSZZ		AT		D	Soft manual [AR-1118]		
32	TLABS3760FCZZ		AC		D	CE mark label (Europe,Algeria,Egypt,Syria, Tunisia,Nigeria,West Africa,Morocco,Jordan,Lebanon)		
101	TLABZ0059QSZZ		AE		D	ECP label [AR-5316(U.S.A,Canada)]		

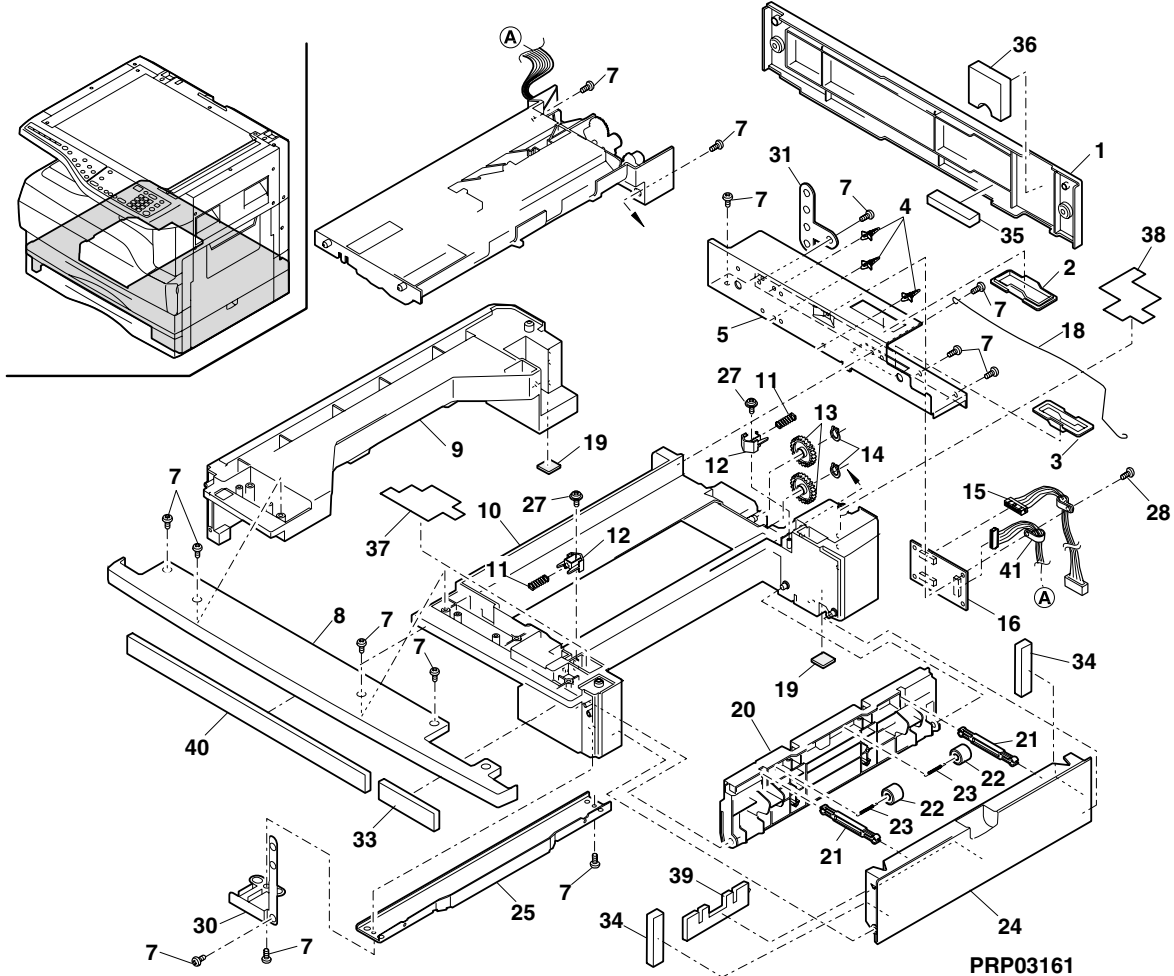
20 Packing material & Accessories



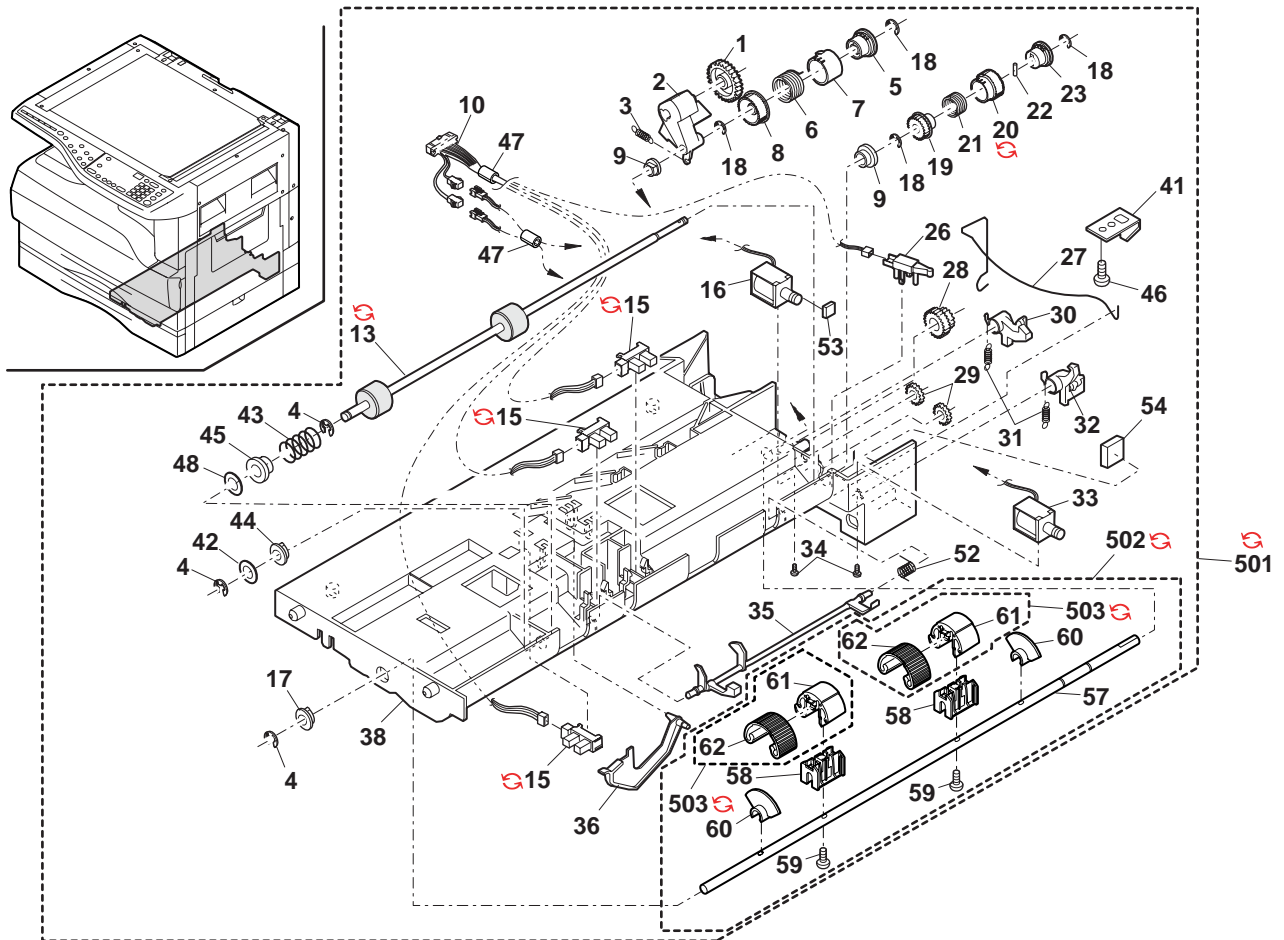
21 2nd Tray exteriors (AR-5320/AR-M205)

NO.	PARTS CODE	Inter-change	PRICE RANK	NEW MARK	PART RANK	DESCRIPTION	TR No.	Effective time
1	GCOV-0020QSE1		AQ		D	Rear cover		
2	GGAD-0001QSZZ		AE		C	Edge guard upper		
3	GGAD-0002QSZZ		AE		C	Edge guard lower		
4	LSUPP0083FCZZ		AB		C	Supporter(LCBS-3)		
5	LPLTM0116QSZZ		AQ		C	Joint plate R		
7	XEBSE40P12000		AA		C	Screw(4x12)		
8	GCOV-0019QSZZ		AT		D	Front cover		
9	PGIDM0049QSE2		BA		C	Guide L		
10	PGIDM0048QSE2		BB		C	Guide R		
11	MSPRC0141QSZZ		AB		C	Transport PG lock spring		
12	MLOKZ0001QSZZ		AC		C	Transport PG lock		
13	NGERH1169FCZZ		AF		C	2nd Joint gear		
14	PRNGP0019FCZZ		AA		C	V ring(GTW-6)		
15	DHAi-0326QSZZ		AM		C	CAS harness		
16	CPWBF0019QSE7		AV		E	1ST tray interface PWB		
18	MSPRD0135QSZZ		AD		C	Joint earth spring		
19	GLEGG0064FCZZ		AC		C	Rubber foot		
20	PGIDM0050QSE1		AM	N	C	1ST transport paper guide		
21	MARMP0015QSZZ		AD		C	1ST door arm		
22	NROLP1060FCZZ		AF		C	U-turn roller		
23	MSPRT0129QSZZ		AC		C	Roller spring		
24	GCOV-0021QSE2		AP		D	1ST right cover		
25	LPLTM0113QSZZ		AH	N	C	Guide R joint plate		
27	XEPSD30P08X00		AA		C	Screw(3x8X)		
28	XHBSE30P14000		AA		C	Screw(3x14)		
30	LPLTM0135QSZZ		AF		C	2nd joint earth plate		
31	LPLTM0138QSZZ		AD		C	2nd joint earth plate left rear		
33	PSHEZ0172QSZZ		AB		C	Front sheet 2	(Europe)	
34	PSHEZ0173QSZZ		AB		C	Right cover sheet	(Europe)	
35	PSPO-0008QSZZ		AC		C	Rear cover cushion 1	(Europe)	
36	PSPO-0009QSZZ		AD		C	Rear cover cushion 2	(Europe)	
37	PSPO-0010QSZZ		AD		C	Guide R cushion F	(Europe)	
38	PSPO-0011QSZZ		AD		C	Guide R cushion R	(Europe)	
39	PSPO-0014QSZZ		AG		C	Right cover cushion 3	(Europe)	
40	PSHEZ0171QSZZ		AD		C	Front sheet 1	(Europe)	
41	LHLDW3142KCZZ		AC		C	Cable band		

21 2nd Tray exteriors (AR-5320/AR-M205)



22 2nd Tray paper feeding unit (AR-5320/AR-M205)



PRP03162

SHARP

COPYRIGHT © 2007 BY SHARP CORPORATION

All rights reserved.

Printed in Japan.

No part of this publication may be reproduced,
stored in a retrieval system, or transmitted.

In any form or by any means,
electronic, mechanical, photocopying, recording, or otherwise,
without prior written permission of the publisher.

SHARP CORPORATION
Digital Document System Group
CS Promotion Center
Yamatokoriyama, Nara 639-1186, Japan
2007 July Printed in Japan ⓘ